



COLOUR PLAY

garnier PROFESSIONAL

Colour Play Hair Colour Range

Godrej Professional Colour Play Hair Colour Range effectively covers every strand resulting in a rich, intense, vibrant, and glossy appearance.

Infused with Hydrolysed Quinoa, Pea Seed Extract, Provitamin B5 and Hyaluronic Acid Salt that are known for reducing frizz and enhancing manageability.

It is also enriched with Hydrolysed Keratin, renowned for its hair repair and strengthening properties.



70 g

Colour Play **Developer**

Godrej Professional Colour Play Developer has a rich, non-drip formulation.

When used with Colour Play range of colours, it provides ultimate coverage for your hair with even, desired, and long-lasting intense shades.

Works well with Colour Play and any other Ammonia Colour Range as well.



1000 ml

WHY CHOOSE

THE GODREJ PROFESSIONAL HAIR COLOUR RANGE



Made just for you

Especially created for different hair types and textures



Easy to use

1:1 Mixing Ratio and 30 min processing time for all shades



Longer Retention

Long-lasting shades



Advanced Developers

Ultimate coverage and long lasting intense shade



Intermixability

Infinite options can be created by mixing our shades



Enriched Formula

Enriched with power combo of Hydrolysed Quinoa, Pea Seed Extract, Provitamin B5, Hyaluronic Acid Salt and Hydrolysed Keratin



COLOUR PLAY

Play with our vibrant shades and create a look that best suits your personality

BASE SHADES



1
Black



3
Dark Brown



4
Brown



5
Light Brown



6
Dark Blonde



7
Blonde

RED REFLECTS



4.26
Brown with
iridescent red reflect



4.6
Brown with red
reflect



6.62
Dark blonde with
red iridescent reflect



6.66
Dark Blonde with
intense red reflect

BROWN REFLECTS



4.8
Brown with
Brown reflect



5.83
Light Brown with
Brown gold reflect



6.8
Dark Blonde with
Brown reflect

ASH REFLECTS



7.11

Blonde with
intense ash reflect



12.1

Super blonde with
ash reflect

GOLD REFLECTS



4.3

Brown with
gold reflect



6.13

Dark blonde
with ash gold reflect



7.3

Blonde with
gold reflect (Caramel)



7.33

Blonde with
intense gold reflect



7.43

Blonde with copper
gold reflect
(Hazel Gold)



8.31

Light blonde with
gold ash reflect



8.34

Light blonde with
gold copper reflect

SUPER BLONDS



9.26

Very light blonde
with iridescent
red reflect



11.2

Super blonde with
iridescent reflect
(Iridescent Blonde)



11.26

Super blonde with
iridescent red reflect
(Cherry Red)



11.6

Super blonde with
red reflect (Red Passion)



12.01

Super blonde with
pearl ash reflect
(Pearl Blonde)



12.13

Super blonde with
Ash gold reflect



12.3

Super blonde with
gold reflect



12.7

Super blonde with
matt reflect

Instruction For Use

INTERMIXABILITY

The Godrej Professional Colour Play hair colour range empowers you to unleash your creativity and offer your clients a fully customized appearance. With the Colour Play range, you have the freedom to craft your unique shades.

SKIN HYPERSENSITIVITY FOR USE:

Always perform a patch test at least 48 hours before every application of the product. Apply it on the area behind the ear and keep it on for a minute.

- Mix a small amount of the developer from the pack and apply on previously dyed hair. Allow it to dry.
- Wash it off after 48 hours with soap and water or alcohol.
- The colour can then be considered safe for use if there's no redness, irritation or swelling.

DO NOT USE IF:

- Your client has a rash on the face or a sensitive, irritated, diseased or damaged scalp.
- Your client has experienced any reaction after previously colouring their hair.
- Your client has experienced a reaction to a temporary 'black henna' tattoo in the past.
- The hair has been coloured with progressive dye or with a progressive hair colourant.
- Use suitable disposable gloves during the preparation, application and rinsing out of the product.
- Avoid contact with eyes and skin. Rinse eyes/skin immediately in case the product comes into contact with them. Consult a physician if the irritation persists.
- Rinse hair well after application.

BASE LEVELS

- 10 - Very Very Light Blonde
- 9 - Very Light Blonde
- 8 - Light Blonde
- 7 - Blonde
- 6 - Dark Blonde
- 5 - Light Brown
- 4 - Brown
- 3 - Dark Brown
- 1 - Black

PRIMARY COLOURS



Blue

Red

Yellow

SECONDARY COLOURS



Violet

Orange

Green

You can create secondary colours by mixing primary colours.

Blue + Red = Violet ▫ Red + Yellow = Orange ▫ Yellow + Blue = Green

COMPLEMENTARY COLOURS

Also known as cutting or neutralising colours, Complementary colours can be established by mixing two colours that sit opposite each other on the colour wheel.

REFLECT NUMBERING

- 1. Ash
- 2. Iridescent (Violet)
- 3. Gold (Yellow)
- 4. Copper (Orange)
- 5. Mahogany
- 6. Red
- 7. Matt (Green)
- 8. Brown

1. MIXING RATIO

| Base Shades | Fashion Shades | Hi-Lift Shades |
|-----------------------------|-----------------------------|-----------------------------|
| Colour : Developer 1 : 1 | Colour : Developer 1 : 1 | Colour : Developer 1 : 1 |

Use the Godrej Professional Colour Play colour tube with the Colour Play Developer. For e.g. one 70 gm tube can be mixed with 70 ml of Developer.

2. APPLICATION & RINSING

- Wear suitable gloves during preparation and application of the product.
- Do not use metallic tools like clips, comb, etc.
- Mix a suitable Colour and Developer to create a cream bath mixture.
- Apply to the roots, length and ends as per the technique and requirement.
- Allow for development time.

DEVELOPMENT TIME (30 MINUTES):

Emulsify 5 minutes before development time. Gently massage into the rest of the hair with a little water. Rinse hair thoroughly. Finish with the specific Godrej Professional Probio Shampoo and Mask.

NOTE: During the development time, the colour of the mixture will change. This is normal and has no effect on the final colour result.

3. TECHNICAL RULES

Godrej Professional Colour Play coverage for grey hair.

| Grey Hair % | Base Shade + Fashion Shade |
|-------------|------------------------------|
| 0-30% | Apply desired shade directly |
| 30-50% | 1/3 + 2/3 |
| 50-70% | 1/2 + 1/2 |
| 75-100% | 2/3 + 1/3 |
| 75-100%* | Apply all base shades |

*Resistant grey hair

COLOUR APPLICATION TECHNIQUES

1. FIRST TIME COLOUR (VIRGIN HAIR) TECHNIQUE

- Begin application on lengths and ends.
- Leave on for 15 minutes.
- Then apply to roots and leave on for 30 minutes.

2. TAKE THROUGH TECHNIQUES

For all lengths and ends:

- Colour change: Take through immediately.
- Same colour but faded: Take through halfway through the development time.
- Same colour: Take through 5 minutes before the end of the development time.

The development time begins after the last colour mixture application.

Follow us on:



GodrejProfessionalIn



godrejprofessional



www.godrejprofessional.com



godrejprofessional

SPA SYSTEM

PAMPER YOUR
STRESSED **HAIR.**

Goody
PROFESSIONAL



The Spa System is a range comprising a shampoo, masks & concentrates, to pamper your stressed hair. Enriched with Apricot oil, Hydrolyzed wheat protein, protein rich complex, Argan oil and Shea butter that nourish, repair, smoothen & add shine to the hair. De-stress, detangle and add gloss to your hair, and make every occasion worth remembering.

SPA SYSTEM NOURISHING SHAMPOO

Suitable for all types of hair

The Spa System Nourishing Shampoo aids in *cleansing hair & scalp in preparation of Hair Spa treatment*. It deeply relaxes and revives your hair.

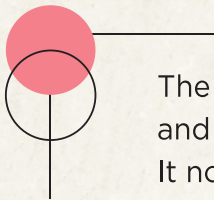
Key Ingredients:

- Apricot Oil and Hydrolyzed Wheat Protein

Benefits:

- Moisturizes hair and scalp
- Prevents hair damage/breakage
- Removes impurities and unclogs scalp pores
- Improves blood circulation & relaxes
- Normalizes oil secretion





The Spa System Masks are enriched with Apricot oils, Silk Amino Acids, Shea butter and protein rich complex - combination of hydrolyzed wheat, soy and corn protein. It nourishes, repairs, smoothens and adds shine to your hair.

NOURISH & REPAIR MASK

For dry to damaged hair

Key Ingredients:

- Apricot Oil and Hydrolyzed Protein Complex

Benefits:

- Protects, conditions and repairs hair
- Transforms hair into soft & rejuvenated hair
- Ideal for very dry & damaged hair

SMOOTH & SHINE MASK

For normal to frizzy hair

Key Ingredients:

- Apricot Oil, Silk Amino Acids and Shea Butter

Benefits:

- Controls frizz and smoothens it
- Deep conditions & adds shine to hair
- Ideal for normal to frizzy & unruly hair



The Spa System Concentrates are infused with nutrients and essential mineral rich ingredients like nourishing oils, shea butter, keratin and protein rich complex. It moisturizes hair and helps repair damaged & distressed hair. It also softens and nourishes very dry hair - making hair look healthy and shiny. A Spa System Concentrate can be used as a standalone service or best combined with a Spa System Mask for added benefit.

NOURISH & REPAIR CONCENTRATE

For dry to damaged hair

Key Ingredients:

- Apricot Oil and Hydrolyzed Protein Complex

Benefits:

- Nourishes, repairs and softens the hair
- Ideal for damaged & distressed hair
- Perfect solution for adding life to hair

SMOOTH & SHINE CONCENTRATE

For dry, frizzy hair

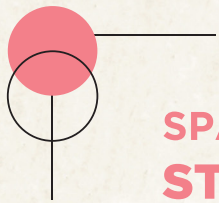
Key Ingredients:

- Apricot Oil, Shea Butter and Linseed Oil

Benefits:

- Smoothens frizzy hair and adds shine
- Ideal for normal to frizzy & unruly hair
- Removes frizz & smoothens your hair





SPA SYSTEM TREATMENT STEP BY STEP



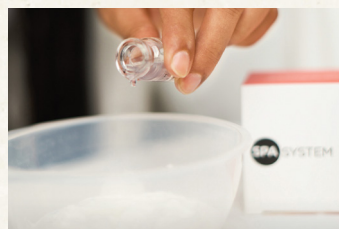
1

Post consultation, shampoo the hair with Spa System Nourishing Shampoo



2

Rinse & towel dry the hair



3

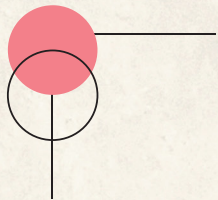
Add 1 vial of concentrate to 40g mask. Mix the mask & concentrate together



4

Apply mask on hair, section by section





5 Massage the scalp and hair for up to 10 minutes



7 Rinse & towel dry the hair

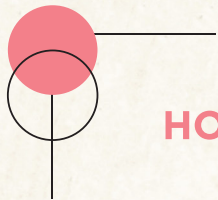


6 Steam hair for 3 mins



8 Blast dry the hair & brush hair smooth





HOME CARE



**PROBIO
HONEY MOISTURE**
FOR DRY & DAMAGED HAIR



**PROBIO
KERATIN REVIVE**
FOR NORMAL TO DRY HAIR



**PROBIO
QUINOA SMOOTH**
FOR FRIZZY & CHEMICALLY
STRAIGHTENED HAIR



**PROBIO
AVOCADO NOURISH**
FOR FRAGILE &
SENSITISED HAIR



Follow us on:



GodrejProfessionalIn



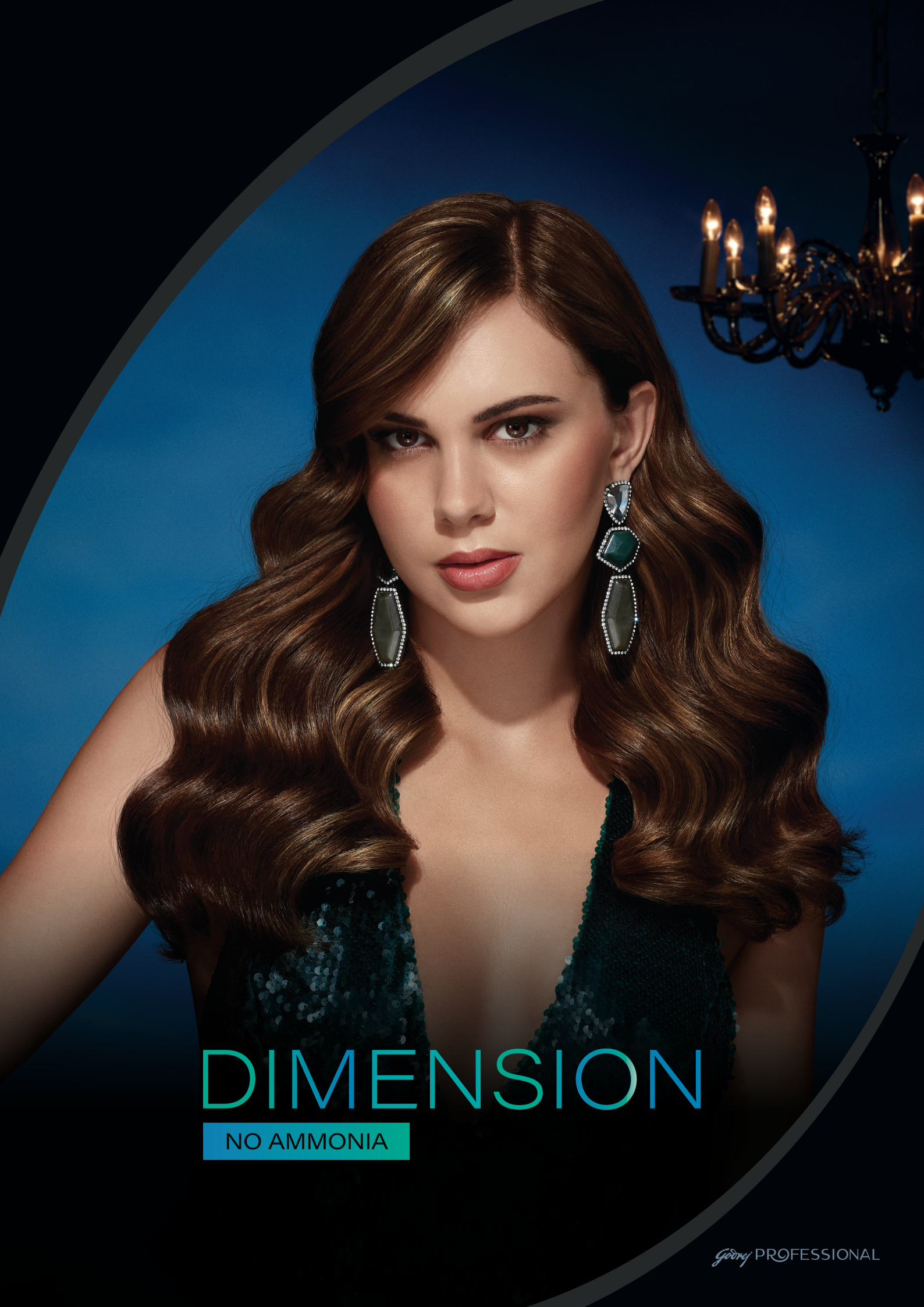
www.godrejprofessional.com



godrejprofessional



godrejprofessional



DIMENSION

NO AMMONIA

Goody PROFESSIONAL

DIMENSION HAIR COLOUR RANGE

Godrej Professional Dimension Hair Colour Range guarantees complete coverage for grey hair and showcases long lasting, beautiful hair colour.

This ammonia free range ensures a gentle colouring experience.

It's formulated with gentle nourishing oils and the goodness of peptide - enriched Amaranth extract, gives healthy - looking hair. This combination promotes smoothness, nourishment and a radiant shine in your hair

INTER MIXABLE-Colors dance together, creating a symphony of endless possibilities.

OIL INFUSED TECHNOLOGY- Unlocking vibrant hues with the nourishing touch of oil.



DIMENSION DEVELOPER

This Oil Infused Godrej Professional Dimension Crème Developer has advanced formulation with flawless consistency that makes application and emulsification simple.

A special blend of conditioners and oil, it provides exceptional conditioning and enhances the shine. So, you get glorious, healthy-looking hair with stunning, vibrant colour.



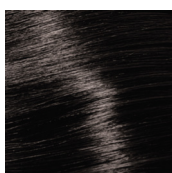
DIMENSION

NO AMMONIA FASHION SHADES

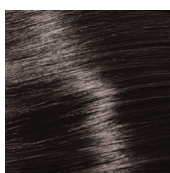
Create A Beautifully Unique Look By Adding Lovely Tints And Reflects To Your Hair

BASE SHADES

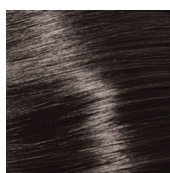
Timeless classic base shades



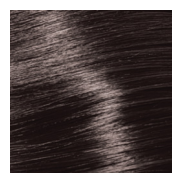
1 Black



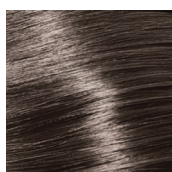
3 Dark Brown



4 Brown



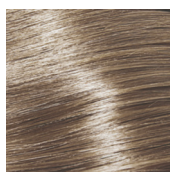
5 Light Brown



6 Dark Blonde



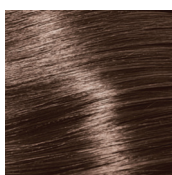
7 Blonde



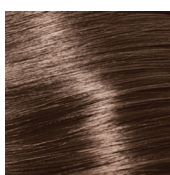
8 Light Blonde

GOLD REFLECTS

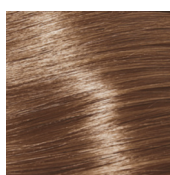
Highlight the golden touch



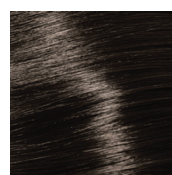
4G Brown
with Intense
Gold Reflect



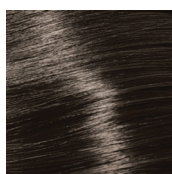
5G Light Brown
with Intense Gold



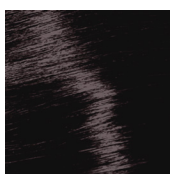
7G Blonde
with Intense
Gold Reflect



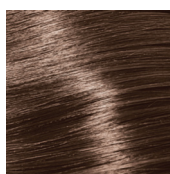
4.3 Brown
with Gold Reflects



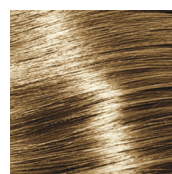
5.3 Light Brown
with Gold Reflect



5.35 Light Brown
with Gold
Mahogany Reflect



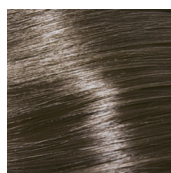
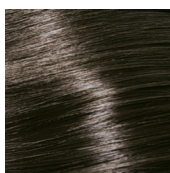
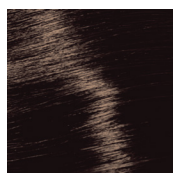
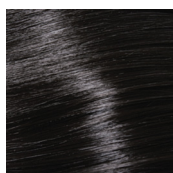
6.34 Dark Blonde
with Gold
Copper Reflect



9.33 Very Light Blonde
with Intense
Gold Reflect

ASH REFLECTS

Embrace elegant attitude of ash shades



5.1 Light Brown
with Ash Reflect

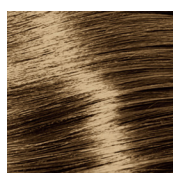
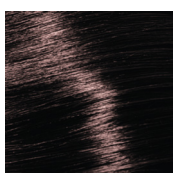
6.17 Dark Blonde
with Ash
Matt Reflect

7.11 Blonde
with Intense
Ash Reflect

9.1 Very Light Blonde
with Ash Reflect

BROWN REFLECTS

Dash of red for alluring & fiery locks

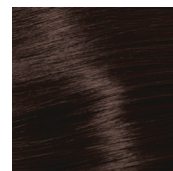
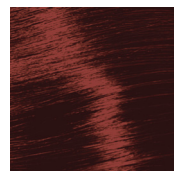
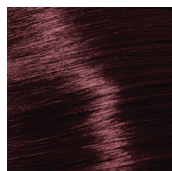
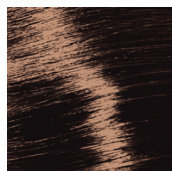
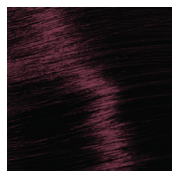
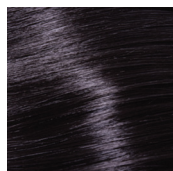


6.88 Dark Blonde
with Intense
Brown Reflect

8.83 Light Blonde
Light Blonde with
Brown Gold Reflect

RED, MAHOGANY IRIDISCENT REFLECTS

Effortlessly chic brown manes



4.20 Brown
with Intense
Iridescent Reflect

4.26 Brown
with Iridescent
Red Reflect

4.56 Brown
with Mahogany
Red Reflect

5.62 Light Brown
with Red
Iridescent Reflect

6.62 Dark Blonde
with Red
Iridescent Reflect

6.52 Dark Blonde
with Mahogany
Iridescent Reflect

WHY CHOOSE

THE GODREJ PROFESSIONAL DIMENSION?



FOR ALL HAIR TYPES

Especially formulated for different hair types & textures



ENRICHED FORMULA

Goodness of peptide enriched Amaranth extract, enriched & nourishing oils provides sheen



BEAUTIFUL & SMOOTH

Maintains softness of hair while making it shiny and glossy



100% COVERAGE

100% grey coverage, from root to tip



AMMONIA FREE

No Ammonia in shades & reflects



SIMPLY MIX, USE & APPLY

Create long lasting shades by mixing



INSTRUCTIONS FOR USE

INTERMIXABILITY

The Godrej Professional Dimension hair colour range empowers you to unleash your creativity and offer your clients a fully customized appearance. With the Dimension range, you have the freedom to craft your unique shades.

SKIN HYPERSENSITIVITY FOR USE:

Always perform a patch test at least 48 hours before every application of the product.

- Apply it on the area behind the ear and keep it on for a minute.
- Mix a small amount of the developer from the pack and apply on previously dyed hair. Allow it to dry.
- Wash it off after 48 hours with soap and water or alcohol.
- The colour can then be considered safe for use if there's no redness, irritation or swelling.

DO NOT USE IF:

- Your client has a rash on the face or a sensitive, irritated, diseased or damaged scalp.
- Your client has experienced any reaction after previously colouring their hair.
- Your client has experienced a reaction to a temporary 'black henna' tattoo in the past.
- The hair has been coloured with progressive dye or with a progressive hair colourant.
- Use suitable disposable gloves during the preparation, application and rinsing out of the product.
- Avoid contact with eyes and skin. Rinse eyes/skin immediately in case the product comes into contact with them. Consult a physician if the irritation persists.
- Rinse hair well after application.

BASE LEVELS

- | | |
|-----------------------------|-----------------|
| 10 - Very Very Light Blonde | 5 - Light Brown |
| 9 - Very Light Blonde | 4 - Brown |
| 8 - Light Blonde | 3 - Dark Brown |
| 7 - Blonde | 1 - Black |
| 6 - Dark Blonde | |

PRIMARY COLOURS



Blue

Red

Yellow

SECONDARY COLOURS

You can create secondary colours by mixing primary colours.



Red + Yellow

Yellow + Blue

Blue + Red

Violet

Orange

Green

COMPLEMENTARY COLOURS

Also known as cutting or neutralising colours, Complementary colours can be established by mixing two colours that sit opposite each other on the colour wheel.

REFLECT NUMBERING

- | | |
|------------------------|-----------------|
| 1. Ash | 5. Mahogany |
| 2. Iridescent (Violet) | 6. Red |
| 3. Gold (Yellow) | 7. Matt (Green) |
| 4. Copper (Orange) | 8. Brown |

1. MIXING RATIO

| Base Shades | Fashion Shades | Hi-Lift Shades |
|-----------------------------|-----------------------------|-----------------------------|
| Colour : Developer 1 : 1 | Colour : Developer 1 : 1 | Colour : Developer 1 : 1 |

Use the Godrej Professional Dimension colour tube with the Dimension developer. For e.g. one 70 gm tube can be mixed with 70 ml of Developer.

2. APPLICATION & RINSING

- Wear suitable gloves during preparation and application of the product.
- Do not use metallic tools like clips, comb, etc.
- Mix a suitable Colour and Developer to create a cream bath mixture.
- Apply to the roots, length and ends as per the technique and requirement.
- Allow for development time.

DEVELOPMENT TIME (30 MINUTES):

Emulsify 5 minutes before development time. Gently massage into the rest of the hair with a little water. Rinse hair thoroughly. Finish with the specific Godrej Professional Probio Shampoo and Mask.

NOTE: During the development time, the colour of the mixture will change. This is normal and has no effect on the final colour result.

COLOUR APPLICATION TECHNIQUES

1. FIRST TIME COLOUR (VIRGIN HAIR) TECHNIQUE

- Begin application on lengths and ends.
- Leave on for 15 minutes.
- Then apply to roots and leave on for 30 minutes.

2. TAKE THROUGH TECHNIQUES

For all lengths and ends:

- **Colour change:** Take through immediately.
- **Same colour but faded:** Take through halfway through the development time.
- **Same colour:** Take through 5 minutes before the end of the development time.

The development time begins after the last colour mixture application.

Follow us on:

 GodrejProfessionalIn

 godrejprofessional

 www.godrejprofessional.com

 godrejprofessional

KERASMOOTH

KERATIN TREATMENT

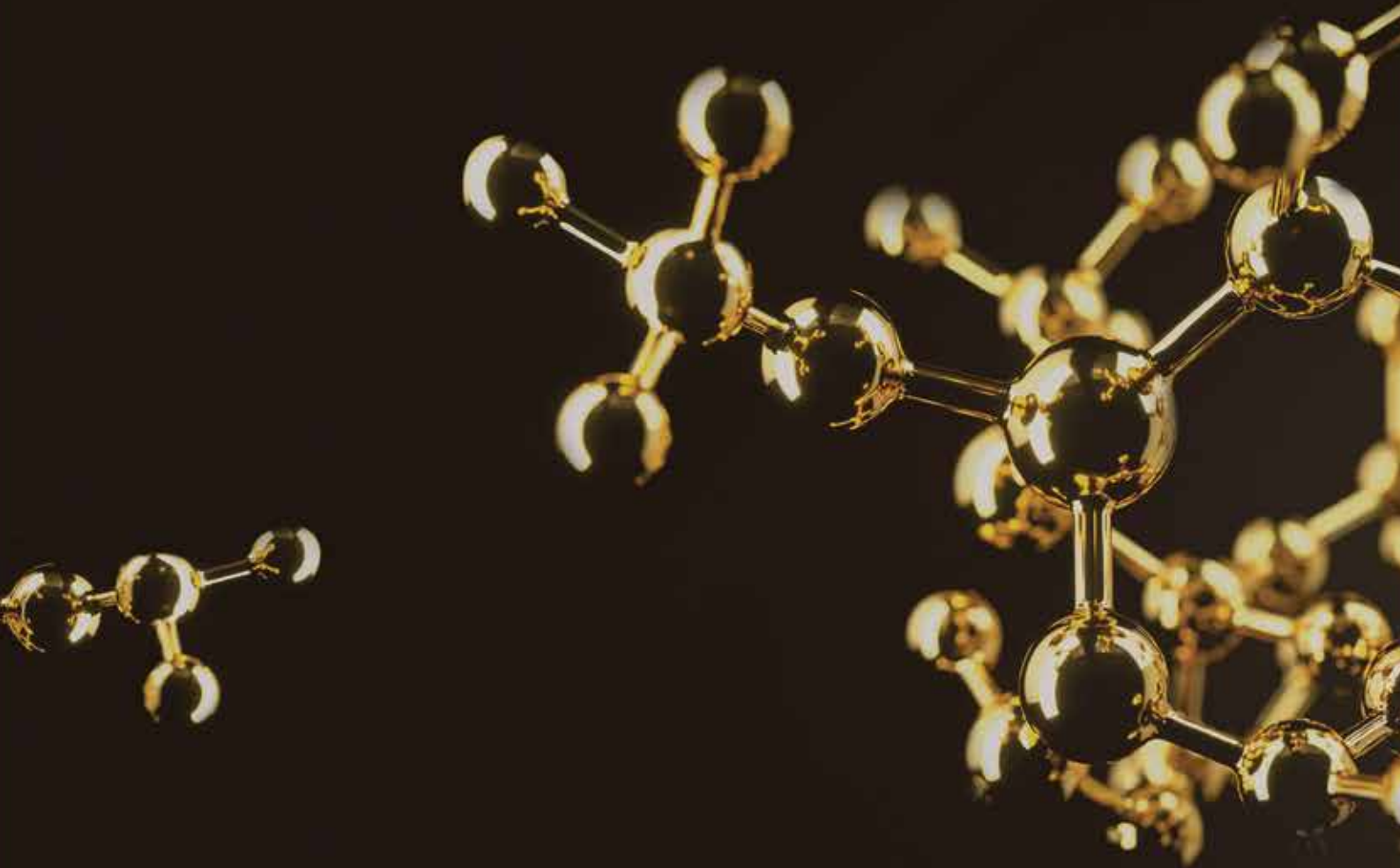


GODREJ PROFESSIONAL

SUMMARY

| | |
|-------------------------------------|--------------|
| What is Keratin? | 01 |
| Kerasmooth Keratin Treatment | 02 |
| Benefits of Kerasmooth | 03 |
| Moisturizing Complex | 04 |
| Introducing the Range | 06-16 |
| Contraindications | 17 |
| Step by Step | 18-22 |
| Transformative results | 23 |
| FAQs | 24-26 |
| Dos & Don'ts | 27-28 |

KERATIN



- **Keratin** is one of a family of fibrous structural proteins.
- It is the **key structural** material making up hair.
- Keratin is also the protein that protects hair from **damage or stress**.
- More than **90% of hair** is made up of **keratin**.

KERASMOOTH

KERATIN TREATMENT

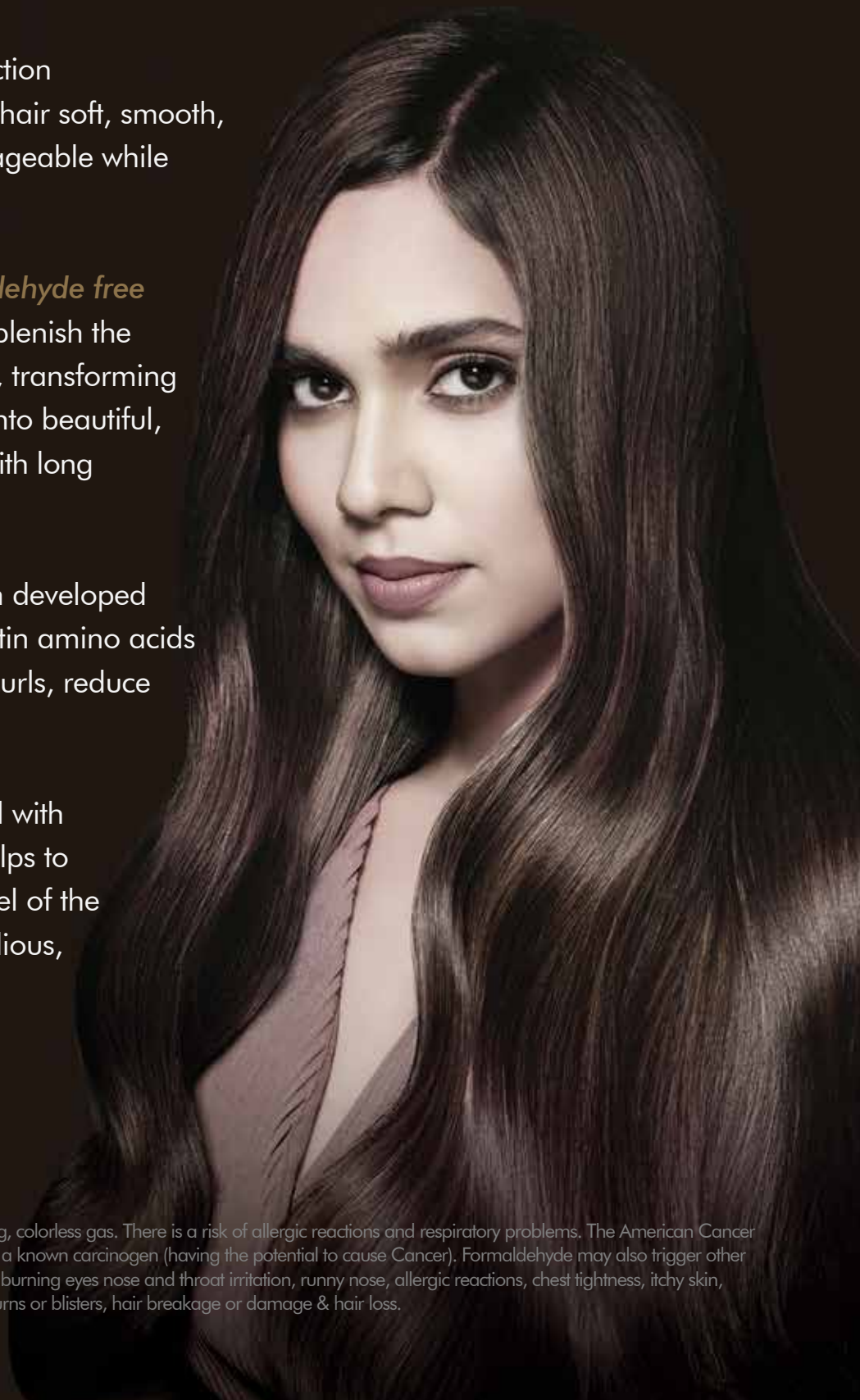
Intense Protein Reconstruction treatment that makes the hair soft, smooth, shiny, frizz-free and manageable while softening curl movement.

It's an advanced, *formaldehyde free formulation* that helps replenish the natural keratin in the hair, transforming wavy, curly or frizzy hair into beautiful, smooth and shiny locks with long lasting smoothened result.

A treatment that has been developed with key ingredients, keratin amino acids to revive hair, smoothen curls, reduce volume and add shine.

The formulation, enriched with Moisturizing Complex, helps to maintain the moisture level of the hair while repairing rebellious, frizzy hair strands.

Formaldehyde is a strong-smelling, colorless gas. There is a risk of allergic reactions and respiratory problems. The American Cancer Society warns that formaldehyde is a known carcinogen (having the potential to cause Cancer). Formaldehyde may also trigger other health effects, like: stinging, itching burning eyes nose and throat irritation, runny nose, allergic reactions, chest tightness, itchy skin, skin rash, scalp irritation & scalp burns or blisters, hair breakage or damage & hair loss.



BENEFITS OF **KERASMOOTH** PROTEIN RECONSTRUCTION TREATMENT

- Reconstructs hair damage by refuelling the proteins of hair
- Tames the hair frizz, making it more manageable
- Smoothens the hair curls/waves giving it a more natural, relaxed appearance and does not create any demarcation lines while the new hair grows out.
- Formaldehyde free formulation hence does not affect the health
- Moisturizing Complex known to provide moisture and shine to hair thus improving hair condition and feel
- Long lasting results that works up to 6 months* on hair (depending on hair type, hair condition, hair product used and number of shampoos done)
- Significantly reduces the blow-dry timing after the treatment

*Based on expert panel study conducted on Damaged hair by external laboratory considering 10 washes per month.

MOISTURIZING COMPLEX

in Kerasmooth Keratin Treatment:

Moisturizing Complex contains a blend of moisturizing agents that are known to help in adding moisture & lustre to hair while reconstructing hair fibres and retain moisture to prevent further hair destruction.



Shea Butter:

Known to provide a conditioning coating to hair while maintaining moisture level in hair. It also provides a smooth and shiny hair surface.



Hydrolyzed Keratin:

Known as a moisture binding agent that increases hair moisture retention to reduce breakage and bring lustre to hair.



Wheat Germ Oil:

Known to contain lipids and vitamins. The efficacy of wheat germ oil is due to its vitamin E content that supports in hair conditioning, moisturizing and works as an anti-oxidant.



Panthenol:

Known to retain moisture in hair. Also known as pro vitamin B5.

FOR TRANSFORMATIVE & LONGER LASTING RESULTS

Get relaxed & frizz free hair for up to 6 months*

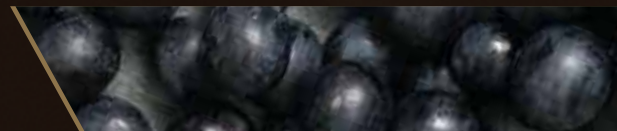
- 98% frizz control for up to 6 months*
- 100% retention of easily manageable hair for up to 6 months**
- Improves shine and smoothness of hair



1 2 3 4

*Based on expert panel study conducted on Damaged hair by external laboratory considering 10 washes per month

** Combability



CLARIFYING SHAMPOO

*For All Types Of Hair
Removes Build Up*

Our deep cleansing Keracare Clarifying Shampoo washes away any build up in the hair. Use this shampoo to prep hair for the Kerasmooth Keratin Treatment or simply to refresh dull, limp hair.

pH 6.5–7

USAGE TIP:

Thoroughly wet hair, apply shampoo evenly on scalp. Massage in gentle circular motions and run the fingers through the lengths of the hair. Rinse thoroughly. Repeat if necessary. In case of contact with eyes, rinse immediately.



KERATIN TREATMENT

Formaldehyde-free formulation
Powered by Moisturizing Complex

Kerasmooth Keratin Treatment is an advanced, formaldehyde free formulation that helps replenish the keratin amino acids in the hair, transforming wavy, curly or frizzy hair into beautiful, smooth and shiny locks. The formulation, enriched with moisturizing complex, helps to maintain the moisture level of the hair while repairing rebellious, frizzy hair strands. Smooth. Shiny. Nourished Hair.

- Works on heena/dye and highly coloured hair
 - No residue
 - No yellow effect on grey hair
 - No greasiness
- No burning sensation in the eyes
- No discomfort in throat and nose

**KERA
SMOOTH**
PROTEIN RECONSTRUCTION
TREATMENT



KERATIN
REDUCES
FRIZZ &
SMOOTHENS HAIR
Moisturizing Complex

NO FORMALDEHYDE

GODREJ PROFESSIONAL
KAROLINE

MOISTURE RECHARGE SHAMPOO

For Normal to Dry Hair
Enriched with Acai Oil & Menthol

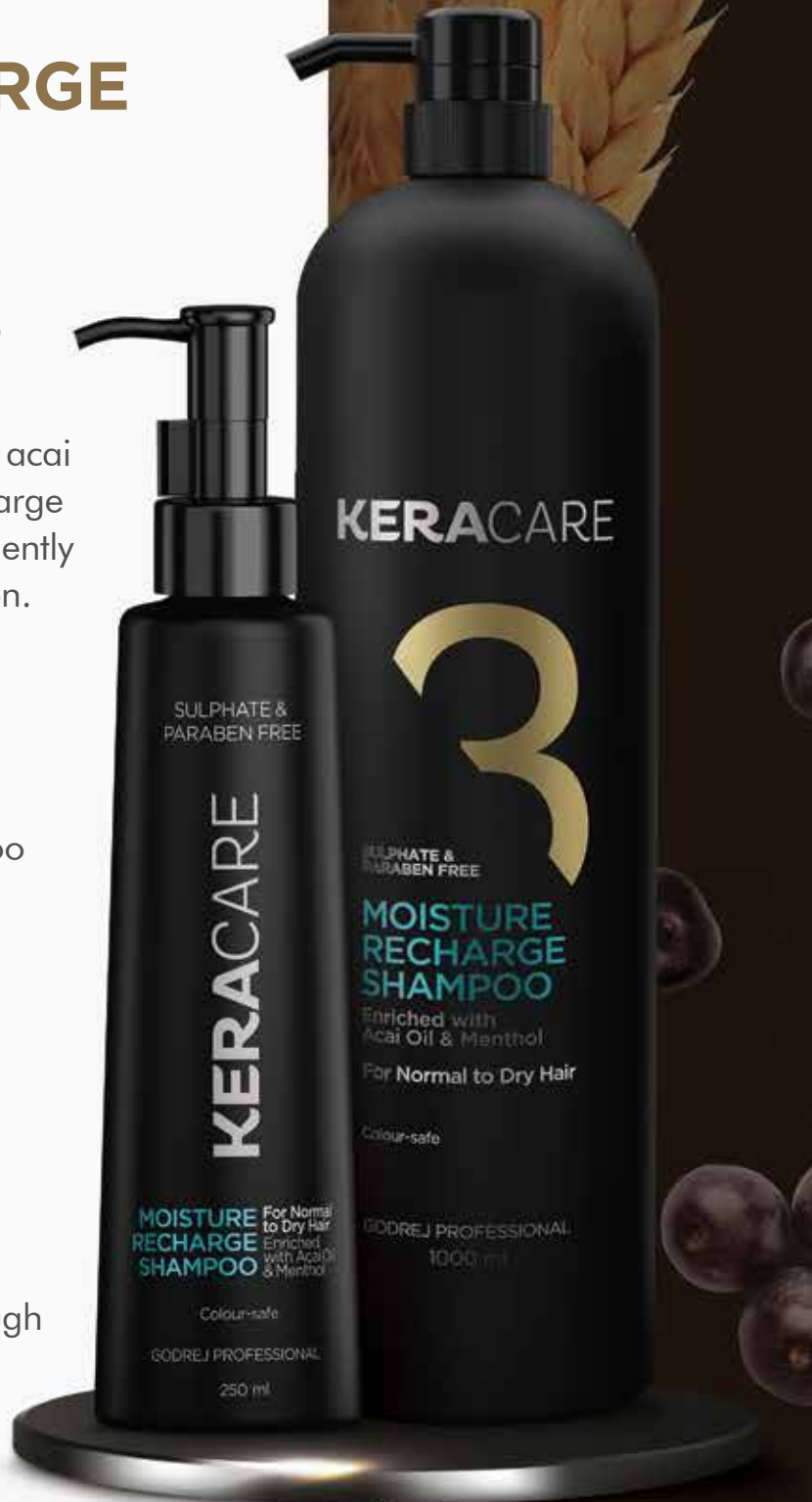
With the harmonious blend of nourishing acai oil plus menthol, Keracare Moisture Recharge **sulphate and paraben free** shampoo gently cleanses hair with a mild cooling sensation. Recharge your hair and make it look moisturized, soft and supple. Made to rejuvenate dull by making it look glossy and bouncy.

Use Keracare Moisture Recharge Shampoo & Conditioner on virgin hair for better results or to preserve the Kerasmooth Protein Reconstruction Treatment

pH 5.5-6

USAGE TIP:

Thoroughly wet hair. Apply shampoo evenly on scalp. Massage in gentle circular motions and run the fingers through the lengths of the hair. Rinse thoroughly. Repeat if necessary. In case of contact with eyes, rinse immediately.



*When tested in lab as shampoo+conditioner/mask vs. ordinary non-conditioning shampoo.

MOISTURE RECHARGE CONDITIONER

*For Normal to Dry Hair
Enriched with Acai Oil & Wheat Protein*

Enriched with the goodness of acai oil and wheat protein the Keracare Moisture Recharge Conditioner makes your hair look nourished and moisturized. Recharge your hair while conditioning for bouncy and shiny locks.*

Use Keracare Moisture Recharge Shampoo & Conditioner on virgin hair for better results or to preserve the Kerasmooth Protein Reconstruction Treatment.

pH 4.5-5

USAGE TIP:

Remove excess water post shampooing. Apply evenly to lengths and ends, avoiding the scalp. Leave it on for at least 3 minutes. Rinse thoroughly. In case of contact with eyes, rinse immediately.

When tested in laboratory conditions.



KERATIN REPAIR SHAMPOO

For Chemically Treated & Damaged Hair
Enriched with Grapeseed Oil

Keracare Keratin Repair Shampoo powered with its unique **sulphate and paraben free** formula contains ingredients known to help revive damaged and chemically treated hair.* Enriched with vitamin E rich grapeseed oil, it ensures cleansing while revealing healthy looking hair.*

Use Keracare Keratin Repair Shampoo and Mask to preserve the Kerasmooth Protein Reconstruction Treatment or simply as a great solution for reviving chemically processed hair.

pH 5.5-6

USAGE TIP:

Thoroughly wet hair. Apply shampoo evenly on scalp. Massage in gentle circular motions and run the fingers through the lengths of the hair. Rinse thoroughly. Repeat if necessary. In case of contact with eyes, rinse immediately.



*When tested in lab as shampoo + conditioner/mask vs. ordinary non-conditioning shampoo.

KERATIN REPAIR MASK

For Chemically Treated & Damaged Hair
Enriched with Grapeseed Oil & Wheat Protein

Keracare Keratin Repair Mask is a great solution for conditioning, reviving and restoring damaged & chemically treated hair. Enriched with the goodness of grapeseed oil and wheat protein it makes your hair look strong and healthy while conditioning*.

Use Keracare Keratin Repair Shampoo & Mask to preserve the Kerasmooth Protein Reconstruction Treatment or simply as a great solution for reviving chemically processed hair.

pH 4.5-5

USAGE TIP:

Remove excess water post shampooing. Scoop a bit of the mask with your fingers and apply evenly to hair lengths and ends, avoiding the scalp. Leave it on for at least 3 minutes. Rinse thoroughly. In case of contact with eyes, rinse immediately.

*When tested in laboratory conditions.

SMOOTH RENEW SHAMPOO

For Dry & Frizzy Hair

Enriched with Macadamia Oil

The Keracare Smooth Renew **Sulphate and Paraben Free** Shampoo is enriched with Macadamia Oil to combat dryness while gently cleansing hair. It helps tame frizz to transform unruly locks into soft, silky and smooth* tresses.

2X Smooth Hair#

Use the Keracare Smooth Renew Shampoo and Mask to renew and maintain the smoothness of your hair.

pH 5.5-6

USAGE TIP:

Thoroughly wet hair. Apply shampoo evenly on scalp. Massage in gentle circular motions and run the fingers through the lengths of the hair. Rinse thoroughly. Repeat if necessary. In case of contact with eyes, rinse immediately.



*When tested in lab as Shampoo + Conditioner/Mask vs ordinary non-conditioning shampoo.

Based on Study conducted (Instrumental test) for Keracare Smooth Renew Shampoo and Mask vs Non conditioning shampoo. Test performed by external agency under controlled laboratory conditions.

SMOOTH RENEW MASK

***For Dry & Frizzy Hair
Enriched with Macadamia Oil
& Wheat Protein***

Enriched with nourishing Macadamia Oil and Hydrolyzed wheat protein, the Keracare Smooth Renew Mask deeply conditions hair. It helps manage dryness and frizz to provide ultimate smoothness to unruly tresses. Its revolutionary conditioning technology makes hair look manageable, naturally soft, smooth and gorgeous*.

2X Smooth Hair#

Use the Keracare Smooth Renew Shampoo with the Mask to renew and maintain the smoothness of your hair

pH 4.5-5

USAGE TIP:

Remove excess water post shampooing. Scoop a bit of the mask with your fingers and apply evenly to hair lengths and ends, avoiding the scalp. Leave it on for at least 3 minutes. Rinse thoroughly. In case of contact with eyes, rinse immediately.

*When tested in lab as Shampoo + Conditioner/Mask vs ordinary non-conditioning shampoo.

Based on Study conducted (Instrumental test) for Keracare Smooth Renew Shampoo and Mask vs Non conditioning shampoo. Test performed by external agency under controlled laboratory conditions.

ACAI OIL

For Normal to Dry & Porous Hair

Our beautifully delicate formula is enriched with nourishing Acai Oil which is known to be rich in essential vitamins & antioxidants that help create a protective barrier for your hair. This formulation leaves the hair looking moisturized, sleek and shiny making it easier to brush and style.

USAGE TIP:

Take 2 pumps on the palms, emulsify & spread over hair focusing on hair lengths and ends. Can be used on dry or damp hair. Do not rinse. In case of contact with eyes rinse immediately.





ARGAN OIL

*For Chemically Treated &
Damaged Hair*

Keracare Argan Oil is enriched with the goodness of Argan Oil known to help repair, strengthen, replenish dry and damaged hair. It is non-greasy and greatly effective to make hair look glossy, silky and supremely conditioned.

USAGE TIP:

Works best on damp, towel dried hair. Take a small quantity on your palms. Apply evenly focusing on mid-lengths and ends. Style as desired. In case of contact with eyes, rinse immediately.

MACADAMIA OIL

For Dry & Frizzy Hair

The Keracare Macadamia Oil is a light, non greasy formula that combats dryness and controls frizz, making unruly hair look smooth & manageable. It renews smoothness, nourishes and adds shine to your tresses without making them heavy.

USAGE TIP:

Take 2 pumps on the palms, emulsify & spread over hair focusing on hair lengths and ends. Can be used on dry or damp hair. Do not rinse. In case of contact with eyes rinse immediately.



CONTRAINDICATIONS

Conditions under which you should not perform a Keratin Treatment



- Pregnancy



- Product Allergies



- Scalp Disorders



- Wounds on scalp

STEP-BY-STEP



STEP 1

Client Consultation to check the hair & scalp for any contraindications like cuts, skin conditions, abrasions before starting the treatment.

STEP 2

Shampoo the hair with Keracare Clarifying Shampoo up to 3 times (depending on hair type) to remove dirt, build up, oil from the hair. For chemically treated hair you can do the 2nd round of shampoo with Keracare Keratin Repair Shampoo once.

Rinse & blast dry the hair 100%.



STEP-BY-STEP



STEP 3

Apply Keracare Acai Oil section by section on highly coloured, porous, sensitised, fragile, dry parts of hair taking thick sections and emulsify well. DO NOT apply Keracare Acai Oil on virgin, resistant hair.

STEP 4

Divide the hair into 4 Sections and starting at the nape area, apply Kerasmooth Keratin Treatment with the applicator bottle. Comb the hair to evenly spread and remove excess product. Product should not be applied on scalp.



STEP-BY-STEP

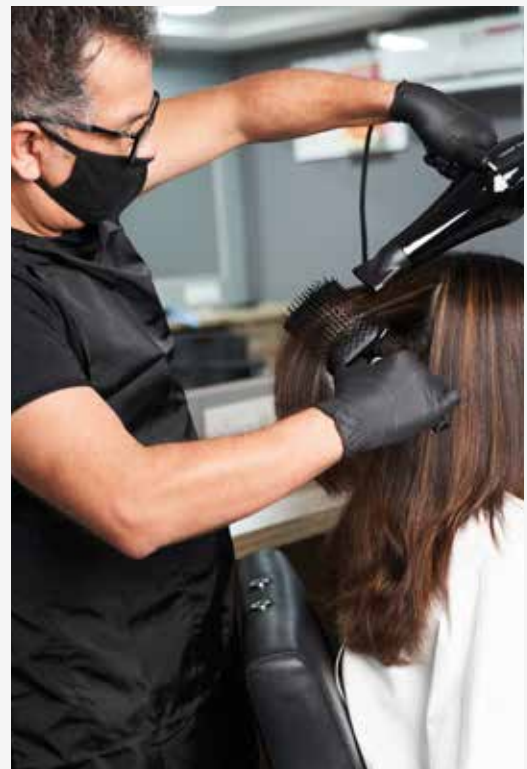


STEP 5

Wrap the hair with a cling film let it process for - 45 minutes (for virgin/untreated/resistant hair). 30 Minutes (for highly sensitised/ coloured hair).

STEP 6

Use a paddle brush to blow dry the hair straight on medium heat & high speed.



STEP-BY-STEP



STEP 7

Post blow-dry, start ironing the hair by taking fine sections at - 210* C (for virgin/ resistant hair) & 170*-200* C (for coloured/ treated hair). Press iron the hair for up to 13 passes per section.

Keep the product on the hair for 24 to 48 hours depending on hair type.

STEP 8

Call the client for the first wash. Before shampooing, flat iron the hair and wait for 15 minutes.



STEP-BY-STEP



STEP 9

Rinse the hair thoroughly with lukewarm water to ensure all the product has been removed. Then shampoo with Keracare Keratin Repair or Moisture Recharge Shampoo and condition with Keracare Keratin Repair Mask + few drops of Keracare Acai Oil mixed with the mask. Keep the mask on hair for at least 7-10 minutes before rinsing it off.

STEP 10

Towel Dry the hair and apply Acai Oil. Dry the hair 100%.



TRANSFORMATIVE RESULTS

BEFORE



AFTER



FAQs

Question

What is the recommended age for Kerasmooth Keratin Treatment?

Can Colour be done before & after Kerasmooth Keratin Treatment?

Why is Kerasmooth Keratin Treatment the best choice?

Will swimming in a pool or in the ocean affect the Kerasmooth Keratin Treatment longevity?

Answer

Kerasmooth Keratin Treatment is recommended for age 15 years and above.

Colour service is recommended a week before Kerasmooth Keratin Treatment with 1-2 shades darker colour. Doing the colour post the Kerasmooth treatment may strip the keratin off the hair.

It offers the best way to reconstruct and transform hair. It is absolutely safe as it is formaldehyde free and works on reconstructing hair while smoothening it adding a lot of shine and softness to give a natural look.

Swimming in a pool or ocean is not recommended after the Kerasmooth Keratin Treatment as the chlorine/salt in the ocean water would cause the treatment to fade away sooner than expected. We recommend using Keracare Acai Oil on hair to take extra care of the hair in case the hair is wet in a swimming pool or ocean water.

FAQs

Question

How long will Kerasmooth Keratin Treatment last in the hair?

Can Kerasmooth Keratin Treatment be used on pregnant women?

Can the Kerasmooth Keratin Treatment be done after any straightening or relaxing service?

Answer

If the next day hair wash process is done followed by the right home care, Kerasmooth Keratin Treatment will last for up to 6 months*, depending on the hair type, hair condition, number of shampoos done by client.

If same day wash process is done followed by right home care, desirable results can be achieved but lasting will vary depending on the hair type, hair condition, number of shampoo's done by client.

We recommend clients consult their doctor before undergoing any such service.

Yes, the Kerasmooth Keratin Treatment can be done post any straightening service. Avoid straightening service over any Keratin treated hair.

*Based on expert panel study conducted on Damaged hair by external laboratory considering 10 washes per month.

FAQs

Question

On the next scheduled visit, should a client just get a touch up of Kerasmooth Keratin Treatment?

What home care is best to use after the service of Kerasmooth Keratin Treatment?

Is Kerasmooth Keratin Treatment a Keratin Treatment or a straightening service?

Answer

Kerasmooth Keratin Treatment does not grow out of the hair but gradually fades out hence it is recommended to do the service on the entire hair and not just regrowth.

The best home care for Kerasmooth Keratin Treatment is Keracare sulphate & paraben free shampoo, conditioner/mask as it's designed to work post the Kerasmooth Keratin Treatment.

Kerasmooth Keratin Treatment is a Formaldehyde free Keratin Treatment that reduces curl volume and gives relaxed look for up to 6 months.* It does not make the hair straight but gives it a naturally smooth look with 98% frizz control for up to 6 months.*

*Based on expert panel study conducted on Damaged hair by external laboratory considering 10 washes per month.

DO's & DON'Ts

Inform the client that Kerasmooth Keratin Treatment is not a permanent straightening or rebonding product and will not make the hair straight.

Make sure the hair is properly shampooed prior to treatment so the cuticles are open before applying the product.

Wrap the hair with cling film after product application.

Apply even amount of cream 1/4th inch away from the roots to end of hair.

If you wish to colour your hair, then do it before the Kerasmooth Treatment, using 1 - 2 shades darker colour.

Any chemical service such as highlighting, colouring or rebonding is recommended a week or two prior to the Kerasmooth Keratin treatment.

Doing a chemical service after doing the Kerasmooth Treatment Keratin may cause the treatment to strip out of the hair..

Avoid hot water always as it will strip your tresses of moisture.

DO's & DON'Ts

Inform client about the benefits and clarify that the treatment improves the condition of the hair and eliminates frizz from it, while adding strength and shine to the hair and giving the hair a naturally smooth and relaxed look.

The treatment gradually fades away from the hair lasting for up to 6 months* (depending on number of shampoo's)

Wash your hair with the suggested Keracare sulphate & paraben free shampoo and conditioner/mask after 2-3 days. Leave the conditioner/mask on hair for a few minutes longer than usual.

Swimming is not recommended after the Kerasmooth Keratin Treatment as the chlorine in the water would cause the treatment to fade away sooner than expected.

Avoid any Ammonium Thioglycolate based treatments post any Keratin treatment (eg: straightening, rebonding, perming etc.)

Shampooing the hair daily, could cause the treatment to fade faster.
The use of Henna or Metallic Dyes before or after the Kerasmooth Keratin Treatment is not recommended as it can affect the result and longevity of the Kerasmooth treatment.

Follow us on



GodrejProfessionalIN
Godrej Professional Hair Pros



godrejprofessional



www.godrejprofessional.com



godrejprofessional



Godrej
PROFESSIONAL



**COLOUR
RANGE**



NO AMMONIA COLOUR RANGE

- The Godrej Professional No Ammonia range uses **Oil Infused Technology** which enriches the hair while providing **100% grey coverage**
- **Colour delivery and retention**, even on dark hair is exceptional

Available in 27 fashionable shades

70g



COLOUR PLAY COLOUR RANGE

- Colour Play has **Hi-Lift colours** to provide **stunning, bold looks**
- The formulation is specially developed with **Oil Infused Technology**
- **Enriches hair** while depositing **beautiful, intense colour**

Available in 7 vibrant shades

70g



OIL INFUSED CRÈME DEVELOPER

- Delivers perfect consistency for easy application and emulsification
- It provides superior conditioning and shine
- Leaves hair looking glorious and healthy with beautiful, intense colour

Available in 4 Strengths

1000 ml



BLONDE FIX

- No ammonia pre lightner
- Upto 7 Level lift
- Enriched with Linseed Oil
- Omega 3 fatty acids that help in maintaining the health of the hair
- Maintains the moisture level and has conditioning effect while lightening the hair

400g



PROBIO



**NURTURE YOUR HAIR.
GIVE YOUR HAIR THE BIO-CARE.***

For all types of hair.

*Enriched with ingredients like Honey, Avocado Oil, Hydrolyzed Keratin, Almond Oil, Olive Oil, Hydrolyzed Quinoa and Jojoba Oil

PROBIO KERATIN REVIVE RANGE

FOR NORMAL TO DRY HAIR

Probio Keratin Revive range is formulated with Rejuve & Revive Bio-care ingredients for Normal to Dry Hair. It consists of paraben free shampoo, mask and serum. Enhanced with Hydrolyzed Keratin that is known to give the hair the Protein Boost, the range revives, rejuvenates and strengthens the hair, leaving it look healthy, smooth and supple.

PROBIO KERATIN REVIVE SHAMPOO

- Cleanses hair gently, from root to tips
- Rejuvenates and reveals healthy hair
- Enriched with Hydrolyzed Keratin for Protein Boost

250ml & 1000ml



PROBIO KERATIN REVIVE MASK

- Effective conditioning that treats hair
- Converts dry hair into smooth and supple hair
- Revives and strengthens hair

200g & 500g



PROBIO KERATIN REVIVE SERUM

- Jojoba oil makes hair shiny and smooth
- Non-greasy formula for the glossy look
- Protects hair

100ml



PROBIO QUINOA SMOOTH

FOR FRIZZY & CHEMICALLY STRAIGHTENED HAIR

Probio Quinoa Smooth range is formulated with richly Replenishing Bio-care ingredients for Frizzy & Chemically Straightened hair. It consists of paraben free shampoo and mask. Fortified with superior Hydrolyzed Quinoa Protein known to contain amino acids, suitable for straightened and frizzy hair to give a smooth, frizz-free and sleek look.

PROBIO QUINOA SMOOTH SHAMPOO

- Breakthrough shampoo formula
- Enriched with Amino Acid rich Quinoa Protein that smoothens hair cuticle
- Provides Frizz Control
- Converts frizzy locks into smooth and manageable hair

250ml & 1000ml



PROBIO QUINOA SMOOTH MASK

- Conditions deeply
- Detangles and defrizzes
- For lustrous, smooth and sleek finish

200g & 500g



PROBIO HONEY MOISTURE

FOR VERY DRY & DAMAGED HAIR

Probio Honey Moisture range is formulated with Hydrating and Nourishing Bio-care ingredients for very Dry and Damaged Hair. It consists of paraben free shampoo, mask and leave-in spray conditioner. Enriched with Honey and Nourishing oils, it helps absorb and retain moisture in hair strands, turns dry hair into well-nourished and healthy hair with intense hydration.

PROBIO HONEY MOISTURE SHAMPOO

- Gently cleanses and moisturizes
- Honey helps in retaining moisture
- Nourishing oils rich in vitamins and anti-oxidants enrich dry strands

250ml & 1000ml



PROBIO HONEY MOISTURE MASK

- Intense conditioning and Moisture Treatment
- Makes hair hydrated, smooth and manageable

200g & 500g

PROBIO HONEY MOISTURE SPRAY CONDITIONER

- Light water based leave-in conditioner
- Gently conditions
- Quickly refreshes and pumps dry and damaged hair
- Reveals soft and manageable hair

100ml



PROBIO AVOCADO NOURISH

FOR FRAGILE AND SENSITISED HAIR

Probio Avocado Nourish range is formulated with Nourishing & Vitamin Restore Bio-care ingredients for Fragile and Sensitised hair. It consists of paraben free shampoo and mask. Enhanced with nutrient rich Avocado and Almond oils that restore vitamins in your hair apart from nourishing, softening and strengthening the fragile and sensitised locks.



PROBIO AVOCADO NOURISH SHAMPOO

- Enriched with Avocado and Almond oils known to strengthen hair
- Gently cleanses fragile and sensitised hair
- Reveals soft and smooth tresses

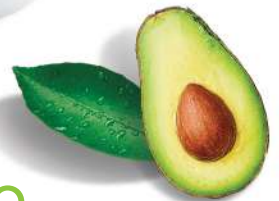
250ml & 1000ml



PROBIO AVOCADO NOURISH MASK

- Conditions and softens fragile and sensitised locks
- Nourishing ingredients nurture and treat fragile hair gently

200g & 500g







KERACARE

REVOLUTIONARY TECHNOLOGY
FOR CAREFREE HAIR

NO SULPHATE | NO PARABEN

The Godrej Professional Keracare Smooth Renew range with its nourishing & conditioning ingredients replenishes & smoothens your hair from the roots to the tips. Consisting of a sulphate and paraben-free shampoo, mask and oil, it helps transform unruly tresses into soft, manageable and 2X smooth hair.*



KERACARE SMOOTH RENEW SHAMPOO



Replenishes & smoothens dry, frizzy hair

- Enriched with Macadamia Oil to combat dryness while gently cleansing hair
- Reveals soft, smooth and healthy silky locks

250ml & 1000ml



KERACARE SMOOTH RENEW MASK



Provides ultimate smoothness to unruly hair

- Enriched with Macadamia Oil & Wheat Protein to deeply condition hair
- Manages dryness & frizz
- Makes hair soft, smooth & manageable

200g & 500g



KERACARE MACADAMIA OIL



For nourished, lustrous, smooth finish

- Light, non-greasy formula, absorbs easily into the hair cuticles
- Nourishes & adds shine to your tresses without making them feel heavy
- Transforms dry, frizzy locks into smooth & manageable hair



100ml

*Based on a study conducted (Instrumental test) for Keracare Smooth Renew Shampoo and Mask vs Non conditioning shampoo. Test performed by external agency under controlled laboratory conditions.

The Godrej Professional Keratin Repair range with its restoring formulation helps repair, revive & strengthen damaged, chemically treated hair. Consisting of a sulphate and paraben-free shampoo, mask and oil, it makes hair look and feel strong & healthy.



KERACARE KERATIN REPAIR SHAMPOO



Cleanses hair while revealing healthy looking hair

- Enriched with Vitamin E rich Grapeseed Oil helps to repair & vitalize revive damaged & chemically treated hair
- Reveals healthy locks

250ml & 1000ml

KERACARE KERATIN REPAIR MASK



Conditions, revives and restores damaged, chemically treated hair

- Enriched with Grapeseed Oil and Wheat Protein helps to revive & restore damaged & chemically treated hair
- Makes hair look strong and healthy while conditioning



200g & 500g



KERACARE ARGAN OIL



For revitalized, silky-gloss finish

- Non-greasy formulation to treat damaged & chemically treated hair
- Repairs, strengthens and replenishes dry, damaged locks
- Leaves hair look glossy and supremely conditioned

100ml

The Godrej Professional Keracare Moisture Recharge range is the ultimate solution for normal to dry hair. With its blend of moisturising ingredients it helps to hydrate your locks and restore moisture. Consisting of a sulphate and paraben-free shampoo, conditioner and oil, it rejuvenates dull locks making it bouncy.



KERACARE MOISTURE RECHARGE SHAMPOO



Cleanses the scalp & hair with a mild cooling sensation

- Enriched with Acai Oil and Menthol to rejuvenate hair and scalp
- Reveals soft, shiny and bouncy locks

250ml & 1000ml



KERACARE MOISTURE RECHARGE CONDITIONER



Provides nourishment and moisture to normal, dry tresses

- Enriched with Acai Oil and Wheat Protein to nourish & moisturize hair
- Helps increase hair elasticity
- Recharges hair while conditioning for bouncy and shiny locks

250g & 1000g



KERACARE ACAI OIL



For moisturized, shiny-sleek finish

- Leaves hair looking moisturised, smooth and shiny
- Rich in antioxidants, helps protect & intensely hydrate even the most porous hair
- Makes hair easier to brush & style

100ml



Godrej
PROFESSIONAL

KERASMOOTH

KERATIN TREATMENT

**TRANSFORMATIVE & LONGER
LASTING RESULTS**

Get relaxed & frizz free hair up to 6 months*

Kerasmooth protein reconstruction treatment is an advanced formaldehyde free formulation developed with keratin amino acids helps revive hair and replenish the natural keratin, transforming wavy, curly or frizzy hair into beautiful, smooth and shiny locks. The formulation, enriched with moisturizing complex, helps to maintain the moisture level of the hair while repairing rebellious, frizzy hair strands.

KERASMOOTH KERATIN TREATMENT

Get relaxed & frizz free hair
for up to 6 months*

- 98% frizz control for up to 6 months*
- 100% retention of easily manageable hair for up to 6 months**
- Improves shine and smoothness of hair

1000ml



KERACARE CLARIFYING SHAMPOO

For all types of hair
removes build up

Our deep cleansing Keracare Clarifying Shampoo washes away any build up in the hair. Use this shampoo to prep hair for the Kerasmooth Keratin Treatment or simply to refresh dull, limp hair.

pH 6.5-7

1000ml

*Based on expert panel study conducted on Damaged Hair by external Laboratory considering 10 washes per month
** Combability

SPA SYSTEM

**PAMPER YOUR
STRESSED HAIR.**

PRO
PROFESSIONAL

The Spa System is a range comprising a shampoo, masks & concentrates, to pamper your stressed hair. Enriched with Apricot oil, Hydrolyzed wheat protein, protein rich complex, Argan oil and Shea butter that nourish, repair, smoothen & add shine to the hair.

De-stress, detangle and add gloss to your hair, and make every occasion worth remembering.



SPA SYSTEM NOURISHING SHAMPOO

SUITABLE FOR ALL TYPES OF HAIR

The Spa System Nourishing Shampoo aids in cleansing hair & scalp in preparation of Hair Spa treatment. It deeply relaxes and revives your hair.

Key Ingredients:

- Apricot Oil and Hydrolyzed Wheat Protein

Benefits:

- Moisturizes hair and scalp
- Prevents hair damage/breakage
- Removes impurities and unclogs scalp pores
- Improves blood circulation & relaxes
- Normalizes oil secretion

1000ml



The Spa System Masks are enriched with Apricot oils, Silk Amino Acids, Shea butter and protein rich complex - combination of hydrolyzed wheat, soy and corn protein. It nourishes, repairs, smoothens and adds shine to your hair.



NOURISH & REPAIR MASK

FOR DRY TO DAMAGED HAIR

Key Ingredients:

- Apricot Oil and Hydrolyzed Protein Complex

Benefits:

- Protects, conditions and repairs hair
- Transforms hair into soft & rejuvenated hair
- Ideal for very dry & damaged hair



500g



SMOOTH & SHINE MASK

FOR NORMAL TO FRIZZY HAIR

Key Ingredients:

- Apricot oil, Silk Amino Acids and Shea Butter

Benefits:

- Controls frizz and smoothens it
- Deep conditions & adds shine to hair
- Ideal for normal to frizzy & unruly hair



500g



The Spa System Concentrates are infused with nutrients and essential mineral rich ingredients like nourishing oils, shea butter, keratin and protein rich complex. It moisturizes hair and helps repair damaged & distressed hair. It also softens and nourishes very dry hair - making hair look healthy and shiny. A Spa System Concentrate can be used as a standalone service or best combined with a Spa System Mask for added benefit.

NOURISH & REPAIR CONCENTRATE

FOR DRY TO DAMAGED HAIR

Key Ingredients:

- Apricot Oil and Hydrolyzed Protein Complex

Benefits:

- Nourishes, repairs and softens the hair
- Ideal for damaged & distressed hair
- Perfect solution for adding life to hair



6 Ampoules x 8ml

SMOOTH & SHINE CONCENTRATE

FOR DRY, FRIZZY HAIR

Key Ingredients:

- Apricot Oil, Shea Butter and Linseed Oil

Benefits:

- Smoothens frizzy hair and adds shine
- Ideal for normal to frizzy & unruly hair
- Removes frizz & smoothens your hair



6 Ampoules x 8ml



AIM

ART IN MOTION

GODREJ PROFESSIONAL

SHINE ON SHINE SPRAY

Boost Shine

- Detangles hair and makes it frizz-free
- Intensifies luminosity and gives hair a radiant finish
- Makes hair soft and smooth to touch.
- Suitable for all hair types



HOLD FACTOR

200ml



HOLD IT HAIR SPRAY

Superior Hold

- Enriched with fixatives that deliver superior hold and instant hair fix.
- Re-workable hair spray. a radiant finish.
- Suitable for all hair types



HOLD FACTOR

200ml

Follow us on:



GodrejProfessionalIn



www.godrejprofessional.com



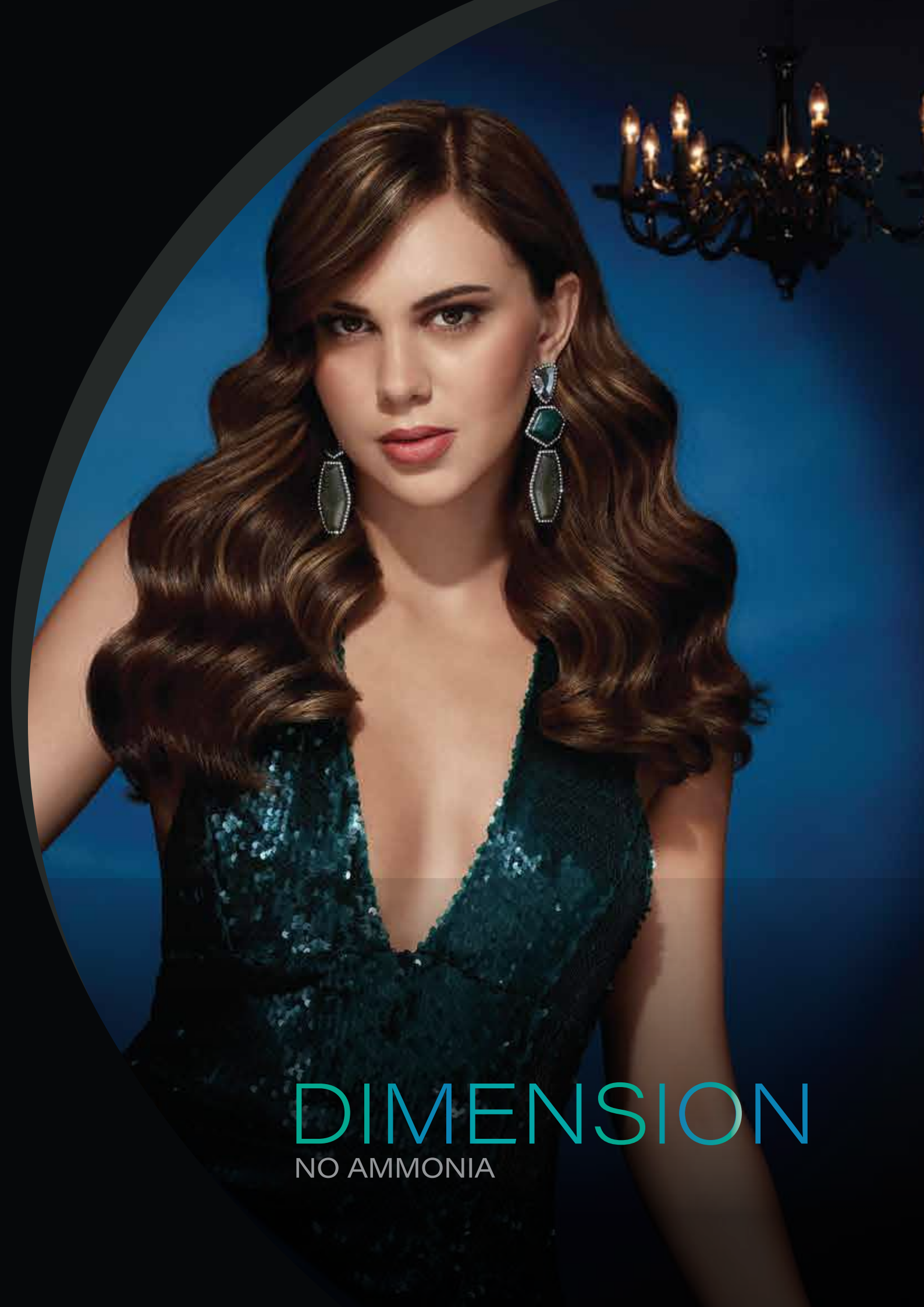
godrej professional



godrejprofessional



Godrej
PROFESSIONAL



DIMENSION

NO AMMONIA

DIMENSION COLOUR RANGE



- Godrej Professional Dimension Hair Colour Range guarantees complete coverage for grey hair and showcases long lasting, beautiful hair colour.
- This ammonia free range ensures a gentle colouring experience.
- It's formulated with gentle nourishing oils and the goodness of peptide-enriched Amaranth extract, gives healthy-looking hair. This combination promotes smoothness, nourishment and a radiant shine in your hair.

Available in 27 shades

70g



DIMENSION DEVELOPER

- This Oil Infused Godrej Professional Dimension Crème Developer has advanced formulation with flawless consistency that makes application and emulsification simple.
- A special blend of conditioners and oil, it provides exceptional conditioning and enhances the shine. So, you get glorious, healthy-looking hair with stunning, vibrant colour.

Available in 4 Strengths

1000 ml





COLOUR PLAY

COLOUR PLAY COLOUR RANGE

- Godrej Professional Colour Play Hair Colour Range effectively covers every strand resulting in a rich, intense, vibrant, and glossy appearance.
- Infused with Hydrolysed Quinoa, Pea Seed Extract, Provitamin B5 and Hyaluronic Acid Salt that are known for reducing frizz and enhancing manageability.
- It is also enriched with Hydrolysed Keratin, renowned for its hair repair and strengthening properties.

Available in 30 shades

70g



COLOUR PLAY DEVELOPER

- Godrej Professional Colour Play Developer has a rich, non-drip formulation.
- When used with Colour Play range of colours, it provides ultimate coverage for your hair with even, desired, and long-lasting intense shades.
- Works well with Colour Play and any other Ammonia Colour Range as well.



1000 ml



Garnier
PROFESSIONAL

BLONDE FIX

NO AMMONIA | PRE-LIGHTENER

7 LEVEL LIFT

BLONDE FIX

- No ammonia pre lightner
- Upto 7 Level lift
- Enriched with Linseed Oil
- Omega 3 fatty acids that help in maintaining the health of the hair
- Maintains the moisture level and has conditioning effect while lightening the hair

400g



Goody
PROFESSIONAL



BOTOSMOOTH

**SALON EXPERT FOR
SUPERIOR HAIR TEXTURE**

For frizz free, shiny and straight look

Formaldehyde free



BOTOSMOOTH

It is a revolutionary treatment to restore and revitalize all types of hair.

It is a perfect professional smoothing treatment that promotes extremely soft hair for color protection, seals the cuticles, reduces volume, does not frizz and reconstructs the hair into natural straight looking hair.

Key ingredients-

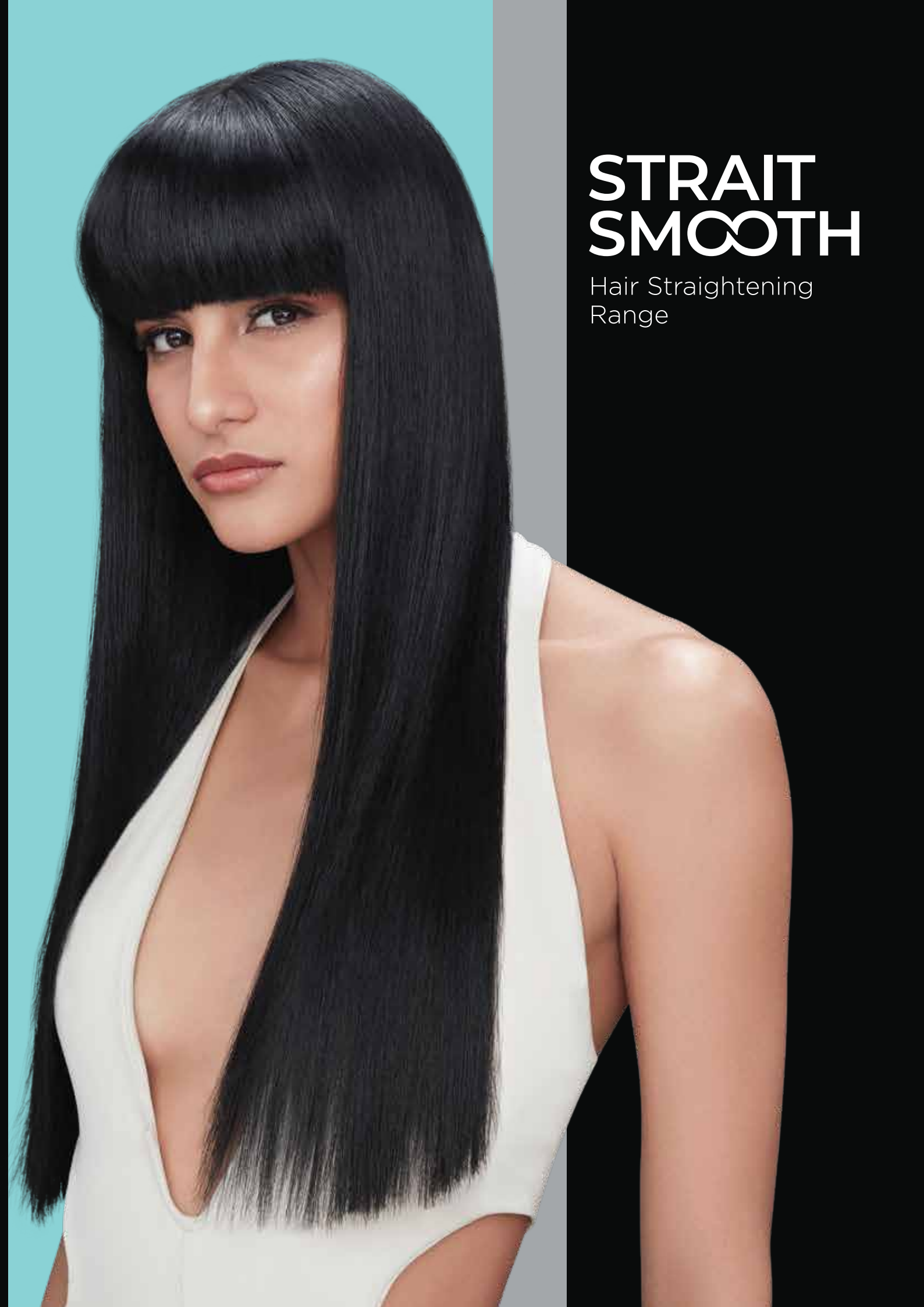
It is enriched with Nutri oils such as Argan oil, Grape seed oil, Coconut oil, Sunflower oil & Shea Butter which are known for their nourishing benefits.

Benefits-

- No Formaldehyde
- Reduces Frizz and Volume
- Straightens Hair
- Makes hair Soft and Shiny
- Easy & Fast Application
- Same Day Wash
- Brazilian Formulation works for All Hair Types
- Enriched with Shea Butter & Nutri oils Argan oil, Grape seed oil, Coconut oil Sunflower oil
- To make the Hair Healthy
- Reconstructs hair fiber

1000 ml





STRAIT SMOOTH

Hair Straightening
Range

STRAIT SMOOTH HAIR STRAIGHTENING RANGE



Intense Hair Straightening Cream **For Virgin/Resistant Hair**

- Tames resistant / curly hair* makes it smooth and straight

500 ml

Mild Hair Straightening Cream **For Chemically Treated Hair**

- Transforms unruly, fragile hair* into straight and sleek tresses

500 ml



Hair Straightening Neutralizing Cream **For All Hair Types**

- Helps reform the bonds

500 ml

*To be used as directed.



KERASMOOTH

KERATIN TREATMENT

**TRANSFORMATIVE & LONGER
LASTING RESULTS**

Get relaxed & frizz free hair up to 6 months*

KERASMOOTH KERATIN TREATMENT

Kerasmooth protein reconstruction treatment is an advanced formaldehyde free formulation developed with keratin amino acids helps revive hair and replenish the natural keratin, transforming wavy, curly or frizzy hair into beautiful, smooth and shiny locks. The formulation, enriched with moisturizing complex, helps to maintain the moisture level of the hair while repairing rebellious, frizzy hair strands.

Get relaxed & frizz free hair
for up to 6 months*

- 98% frizz control for up to 6 months*
- 100% retention of easily manageable hair for up to 6 months**
- Improves shine and smoothness of hair

1000ml



KERACARE CLARIFYING SHAMPOO

For all types of hair
removes build up

Our deep cleansing Keracare Clarifying Shampoo washes away any build up in the hair. Use this shampoo to prep hair for the Kerasmooth Keratin Treatment or simply to refresh dull, limp hair.

pH 6.5-7

1000ml

*Based on expert panel study conducted on Damaged Hair by external Laboratory considering 10 washes per month
** Combability



KERACARE

REVOLUTIONARY TECHNOLOGY
FOR CAREFREE HAIR

NO SULPHATE | NO PARABEN

KERACARE SMOOTH RENEW RANGE

The Godrej Professional Keracare Smooth Renew range with its nourishing & conditioning ingredients replenishes & smoothens your hair from the roots to the tips. Consisting of a sulphate and paraben-free shampoo, mask and oil, it helps transform unruly tresses into soft, manageable and 2X smooth hair.*



KERACARE SMOOTH RENEW SHAMPOO



Replenishes & smoothens dry, frizzy hair

- Enriched with Macadamia Oil to combat dryness while gently cleansing hair
- Reveals soft, smooth and healthy silky locks

250ml & 1000ml



KERACARE SMOOTH RENEW MASK



Provides ultimate smoothness to unruly hair

- Enriched with Macadamia Oil & Wheat Protein to deeply condition hair
- Manages dryness & frizz
- Makes hair soft, smooth & manageable

200g & 500g



KERACARE MACADAMIA OIL



For nourished, lustrous, smooth finish

- Light, non-greasy formula, absorbs easily into the hair cuticles
- Nourishes & adds shine to your tresses without making them feel heavy
- Transforms dry, frizzy locks into smooth & manageable hair



100ml

*Based on a study conducted (Instrumental test) for Keracare Smooth Renew Shampoo and Mask vs Non conditioning shampoo. Test performed by external agency under controlled laboratory conditions.

KERACARE KERATIN REPAIR RANGE

The Godrej Professional Keratin Repair range with its restoring formulation helps repair, revive & strengthen damaged, chemically treated hair. Consisting of a sulphate and paraben-free shampoo, mask and oil, it makes hair look and feel strong & healthy.



KERACARE KERATIN REPAIR SHAMPOO



Cleanses hair while revealing healthy looking hair

- Enriched with Vitamin E rich Grapeseed Oil helps to repair & vitalize revive damaged & chemically treated hair
- Reveals healthy locks



250ml & 1000ml

KERACARE KERATIN REPAIR MASK



Conditions, revives and restores damaged, chemically treated hair

- Enriched with Grapeseed Oil and Wheat Protein helps to revive & restore damaged & chemically treated hair
- Makes hair look strong and healthy while conditioning



200g & 500g



KERACARE ARGAN OIL



For revitalized, silky-gloss finish

- Non-greasy formulation to treat damaged & chemically treated hair
- Repairs, strengthens and replenishes dry, damaged locks
- Leaves hair look glossy and supremely conditioned

100ml

KERACARE MOISTURE RECHARGE RANGE

The Godrej Professional Keracare Moisture Recharge range is the ultimate solution for normal to dry hair. With its blend of moisturising ingredients it helps to hydrate your locks and restore moisture. Consisting of a sulphate and paraben-free shampoo, conditioner and oil, it rejuvenates dull locks making it bouncy.

KERACARE MOISTURE RECHARGE SHAMPOO



Cleanses the scalp & hair with a mild cooling sensation

- Enriched with Acai Oil and Menthol to rejuvenate hair and scalp
- Reveals soft, shiny and bouncy locks

250ml & 1000ml



KERACARE MOISTURE RECHARGE CONDITIONER



Provides nourishment and moisture to normal, dry tresses

- Enriched with Acai Oil and Wheat Protein to nourish & moisturize hair
- Helps increase hair elasticity
- Recharges hair while conditioning for bouncy and shiny locks

250g & 1000g



KERACARE ACAI OIL



For moisturized, shiny-sleek finish

- Leaves hair looking moisturised, smooth and shiny
- Rich in antioxidants, helps protect & intensely hydrate even the most porous hair
- Makes hair easier to brush & style

100ml



PROBIO



**NURTURE YOUR HAIR.
GIVE YOUR HAIR THE BIO-CARE.***

For all types of hair.

*Enriched with ingredients like Honey, Avocado Oil, Hydrolyzed Keratin, Almond Oil, Olive Oil, Hydrolyzed Quinoa and Jojoba Oil

PROBIO KERATIN REVIVE

FOR NORMAL TO DRY HAIR

Probio Keratin Revive range is formulated with Rejuve & Revive Bio-care ingredients for Normal to Dry Hair. It consists of paraben free shampoo, mask and serum. Enhanced with Hydrolyzed Keratin that is known to give the hair the Protein Boost, the range revives, rejuvenates and strengthens the hair, leaving it look healthy, smooth and supple.

PROBIO KERATIN REVIVE SHAMPOO

- Cleanses hair gently, from root to tips
- Rejuvenates and reveals healthy hair
- Enriched with Hydrolyzed Keratin for Protein Boost

250ml & 1000ml



PROBIO KERATIN REVIVE MASK

- Effective conditioning that treats hair
- Converts dry hair into smooth and supple hair
- Revives and strengthens hair

200g & 500g



PROBIO KERATIN REVIVE SERUM

- Jojoba oil makes hair shiny and smooth
- Non-greasy formula for the glossy look
- Protects hair

100ml



PROBIO QUINOA SMOOTH RANGE

FOR FRIZZY & CHEMICALLY STRAIGHTENED HAIR

Probio Quinoa Smooth range is formulated with richly Replenishing Bio-care ingredients for Frizzy & Chemically Straightened hair. It consists of paraben free shampoo and mask. Fortified with superior Hydrolyzed Quinoa Protein known to contain amino acids, suitable for straightened and frizzy hair to give a smooth, frizz-free and sleek look.

PROBIO QUINOA SMOOTH SHAMPOO

- Breakthrough shampoo formula
- Enriched with Amino Acid rich Quinoa Protein that smoothens hair cuticle
- Provides Frizz Control
- Converts frizzy locks into smooth and manageable hair

250ml & 1000ml



PROBIO QUINOA SMOOTH MASK

- Conditions deeply
- Detangles and defrizzes
- For lustrous, smooth and sleek finish

200g & 500g



PROBIO HONEY MOISTURE RANGE

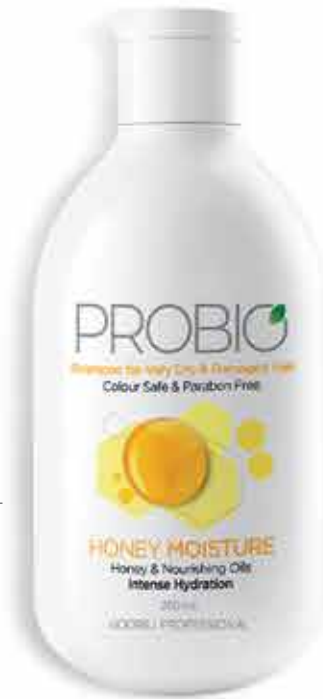
FOR VERY DRY & DAMAGED HAIR

Probio Honey Moisture range is formulated with Hydrating and Nourishing Bio-care ingredients for very Dry and Damaged Hair. It consists of paraben free shampoo, mask and leave-in spray conditioner. Enriched with Honey and Nourishing oils, it helps absorb and retain moisture in hair strands, turns dry hair into well-nourished and healthy hair with intense hydration.

PROBIO HONEY MOISTURE SHAMPOO

- Gently cleanses and moisturizes
- Honey helps in retaining moisture
- Nourishing oils rich in vitamins and anti-oxidants enrich dry strands

250ml & 1000ml



PROBIO HONEY MOISTURE MASK

- Intense conditioning and Moisture Treatment
- Makes hair hydrated, smooth and manageable

200g & 500g



PROBIO HONEY MOISTURE SPRAY CONDITIONER

- Light water based leave-in conditioner
- Gently conditions
- Quickly refreshes and pumps dry and damaged hair
- Reveals soft and manageable hair

100ml



SPA SYSTEM

PAMPER YOUR
STRESSED **HAIR.**



SPA SYSTEM

The Spa System is a range comprising a shampoo, masks & concentrates, to pamper your stressed hair. Enriched with Apricot oil, Hydrolyzed wheat protein, protein rich complex, Argan oil and Shea butter that nourish, repair, smoothen & add shine to the hair.

De-stress, detangle and add gloss to your hair, and make every occasion worth remembering.



SPA SYSTEM NOURISHING SHAMPOO

SUITABLE FOR ALL TYPES OF HAIR

The Spa System Nourishing Shampoo aids in cleansing hair & scalp in preparation of Hair Spa treatment. It deeply relaxes and revives your hair.

Key Ingredients:

- Apricot Oil and Hydrolyzed Wheat Protein

Benefits:

- Moisturizes hair and scalp
- Prevents hair damage/breakage
- Removes impurities and unclogs scalp pores
- Improves blood circulation & relaxes
- Normalizes oil secretion

1000ml



The Spa System Masks are enriched with Apricot oils, Silk Amino Acids, Shea butter and protein rich complex - combination of hydrolyzed wheat, soy and corn protein. It nourishes, repairs, smoothens and adds shine to your hair.



NOURISH & REPAIR MASK

FOR DRY TO DAMAGED HAIR

Key Ingredients:

- Apricot Oil and Hydrolyzed Protein Complex

Benefits:

- Protects, conditions and repairs hair
- Transforms hair into soft & rejuvenated hair
- Ideal for very dry & damaged hair



500g



SMOOTH & SHINE MASK

FOR NORMAL TO FRIZZY HAIR

Key Ingredients:

- Apricot oil, Silk Amino Acids and Shea Butter

Benefits:

- Controls frizz and smoothens it
- Deep conditions & adds shine to hair
- Ideal for normal to frizzy & unruly hair



500g

The Spa System Concentrates are infused with nutrients and essential mineral rich ingredients like nourishing oils, shea butter, keratin and protein rich complex. It moisturizes hair and helps repair damaged & distressed hair. It also softens and nourishes very dry hair - making hair look healthy and shiny. A Spa System Concentrate can be used as a standalone service or best combined with a Spa System Mask for added benefit.

NOURISH & REPAIR CONCENTRATE

FOR DRY TO DAMAGED HAIR

Key Ingredients:

- Apricot Oil and Hydrolyzed Protein Complex

Benefits:

- Nourishes, repairs and softens the hair
- Ideal for damaged & distressed hair
- Perfect solution for adding life to hair



6 Ampoules x 8ml

SMOOTH & SHINE CONCENTRATE

FOR DRY, FRIZZY HAIR

Key Ingredients:

- Apricot Oil, Shea Butter and Linseed Oil

Benefits:

- Smoothens frizzy hair and adds shine
- Ideal for normal to frizzy & unruly hair
- Removes frizz & smoothens your hair



6 Ampoules x 8ml



AIM

ART IN MOTION



SHINE ON SHINE SPRAY

Boost Shine

- Detangles hair and makes it frizz-free
- Intensifies luminosity and gives hair a radiant finish
- Makes hair soft and smooth to touch.
- Suitable for all hair types



HOLD FACTOR

200ml



HOLD IT HAIR SPRAY

Superior Hold

- Enriched with fixatives that deliver superior hold and instant hair fix.
- Re-workable hair spray, a radiant finish.
- Suitable for all hair types



HOLD FACTOR

200ml

Follow us on:



GodrejProfessionalIn



www.godrejprofessional.com



godrej professional



godrejprofessional



PROFESSIONAL

BOTOSMOOTH

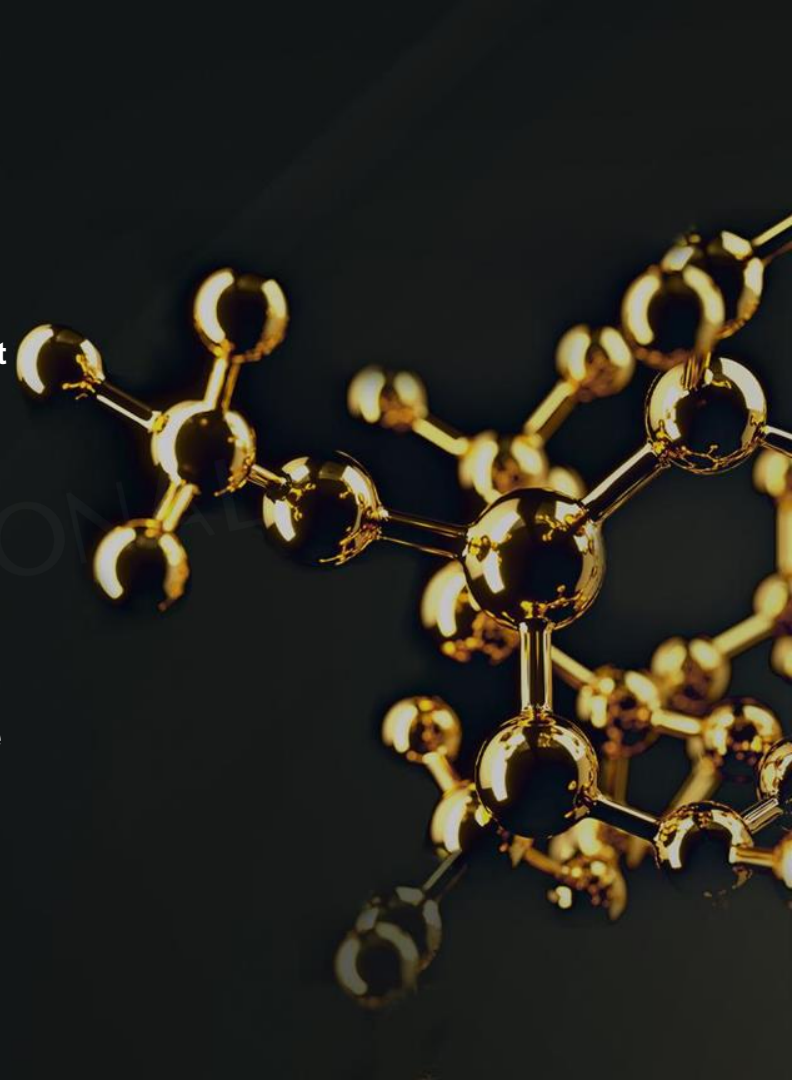
SALON EXPERT FOR SUPERIOR HAIR TEXTURE

For frizz free, shiny and straight look

Formaldehyde free

Botosmooth

- Hair botosmooth is a deep conditioning treatment for hair that revitalises your locks by making them look volumized, while nourishing them from the roots.
- Restores & helps achieve that healthy shine that reflects light effortlessly, giving the hair a healthier, younger appearance.
- A hair botosmooth treatment acts as a filler
- The treatment infuses the hair with intense hydration while replacing/filling in the lost cuticle layers, creating a protective barrier, coating the hair shaft in essence, with all the care ingredients infused in the product.



BOTOSMOOTH

- Botosmooth produces semi-permanent hair straightening without breaking the cystine disulfide bridge. It provides long lasting relaxing effect of hair fibres, without causing damage to the hair and scalp irritations typical of alkaline chemical and other straightening agents.
- The small molecular size of Botosmooth treatment is an ideal addition to effectively repair the broken keratin hydrogen bonds that lead to brittle hair by penetrating deep into hair strands and instigating subsequent crosslink repair.
- Godrej professional Botosmooth is a latest innovation and absolutely formaldehyde free formulation. Its infused with shea butter and packed with nutri oils like argan oil, grape seed oil, coconut oil and sunflower oil which in turn gives massive shine and smoothness to the hair along with up to 90% straight hair





Benefits of

BOTOSMOOTH

- Reconstructs hair damage by refuelling the proteins in hair
- Tames frizzy hair making it more manageable
- straightens hair upto 90 %*
- Formaldehyde free formulation does not affect the health
- Infused with shea butter and rich nutri oils
- Long lasting results that works up to 60 washes on hair (depending on hair type, hair condition, hair product used and number of shampoos done)
- Natural smooth hair look that does not create any demarcation lines while new hair grows out
- Reduces around 80% of the blow-dry time after the treatment

Moisturizing Complex

in Botosmooth Protein Reconstruction Treatment:

Moisturizing Complex contains a blend of moisturizing agents that are known to help in adding moisture & lustre to hair while reconstructing hair fibres and retain moisture to prevent further hair destruction



SHEA BUTTER

Known to provide a conditioning coating to hair while maintaining moisture level in hair. It also provides a smooth and shiny hair surface.



NUTRI OILS

ARGAN OIL

It helps to neutralize hair damage, as well as providing the moisture needed to prevent future damage, splitting and breakage.



GRAPE SEED OIL

It has a high amount of phenolic compounds which are antioxidants and can protect the hair from UV damage.



COCONUT OIL

It moisturizes and conditions the hair. Also helps in reducing protein loss in all hair types. Because this oil is rich in lauric acid and can easily penetrate inside the hair.



SUNFLOWER OIL

It provides your scalp and strands with the nutrients needed for shiny, strong hair. Its hydrating, promotes scalp and hair health.



Contraindications

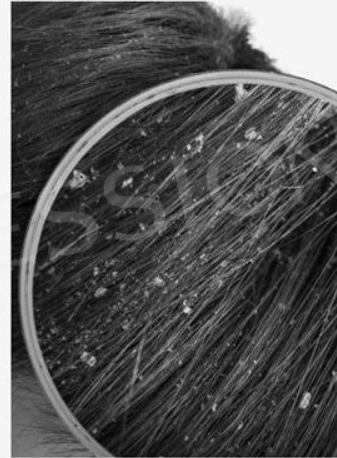
Conditions under which you should not perform a Keratin Treatment



Pregnancy



Product Allergies



**Skin/Scalp
Disorders or
Infection**



**Cuts and wounds
on scalp**

KERACARE

Clarifying Shampoo

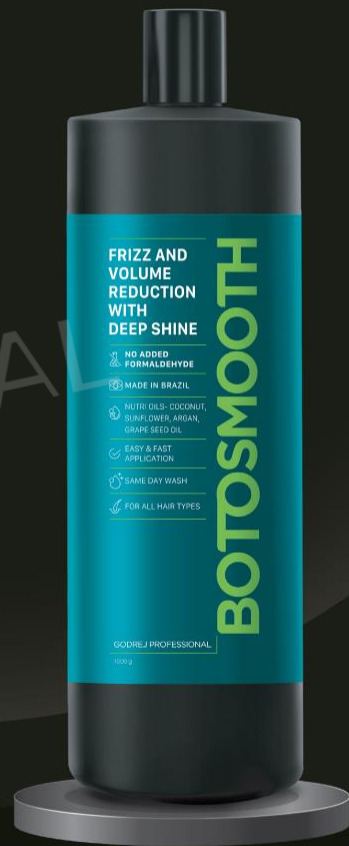
For deep cleansing

- Our deep cleansing Keracare Clarifying Shampoo washes away any build up in the hair. Use this shampoo to prep hair for the KeraSmooth Protein Reconstruction Treatment or simply to refresh dull, limp hair.
- **USAGE TIP:**
Wet your hair thoroughly before applying the shampoo evenly on scalp. Massage gently in circular motions, running fingers through the lengths of the hair.
- **pH 6.5 - 7**



BOTOSMOOTH

- The formulation, enriched with Moisturizing Complex, helps to maintain the moisture level of the hair while repairing rebellious, frizzy hair strands.
- Long-lasting smooth effect on hair for upto 60 washes
- No smell, irritation of uncomfortable experience during the treatment



KERACARE

Moisture Recharge Shampoo

For normal to dry hair

- Keracare Moisture Recharge is a sulphate and paraben free shampoo
- The harmonious blend of nourishing acai oil and menthol gently cleanses hair with a mild cooling sensation. Recharges your hair and makes it look moisturized, soft and supple. Made to rejuvenate dull hair, making it glossy and bouncy
- **USAGE TIP:** Wet your hair thoroughly before applying shampoo evenly on scalp. Massage gently in circular motions and running fingers through the lengths of the hair.
- **pH 5.5- 6**



KERACARE

Moisture Recharge Conditioner

For normal to dry hair

- Enriched with acai oil and wheat protein
- Keracare Moisture Recharge Conditioner makes your hair look nourished and moisturized. Recharge your hair while conditioning for bouncy and shiny locks. Works beautifully for all hair types, suitable for everyday use as well
- **USAGE TIP:** Remove excess water post shampooing. Apply evenly to lengths and ends, avoiding the scalp. Leave on for at least 3 minutes. Rinse thoroughly.
- **pH 4.5- 5**



KERACARE

Keratin Repair Shampoo

For chemically treated and damaged hair

- Keracare Keratin Repair Shampoo is a sulphate and paraben free shampoo enriched with vitamin E rich grapeseed oil
- It ensures cleansing while revealing healthy looking hair.* Use Keracare Keratin Repair Shampoo and Mask to preserve the KeraSmooth Protein Reconstruction Treatment or simply as a great solution for reviving chemically processed hair.
- **USAGE TIP:** : Wet your hair thoroughly before applying shampoo evenly on scalp. Massage gently in circular motions and running fingers through the lengths of the hair.
- **pH 5.5- 6**



KERACARE

Keratin Repair Mask

For chemically treated and damaged hair

- Enriched with the goodness of grapeseed oil and wheat protein it makes your hair strong and healthy while conditioning
- KeraCare Keratin Repair Mask is a great solution for deep conditioning, reviving and restoring damaged & chemically treated hair.
- **USAGE TIP:** Remove excess water post shampooing. Scoop a bit of the mask with your fingers and apply evenly to lengths and ends, avoiding the scalp, Leave on for at least 3 to 5 minutes. Rinse thoroughly.
- **pH 4.5-5**



KERACARE

Smooth Renew Shampoo

For dry and frizzy hair

- Enriched with macadamia oil to combat dryness while gently cleansing hair.
- Keracare Smooth Renew Shampoo helps tame frizz to transform unruly locks into soft, silky and smooth* tresses.
- **2X Smooth Hair****: Use the Keracare Smooth Renew Shampoo and Mask to renew and maintain the smoothness of your hair.
- **USAGE TIP**: Wet your hair thoroughly before applying shampoo evenly on scalp. Massage gently in circular motions and running fingers through the lengths of the hair.
- **pH 5.5-6**

*When tested in lab as Shampoo + Conditioner/Mask vs ordinary non-conditioning shampoo.

** Based on Study conducted (Instrumental test) for Keracare Smooth Renew Shampoo and Mask vs Non conditioning shampoo. Test performed by external agency under controlled laboratory conditions.



KERACARE

Smooth Renew Mask

For chemically treated and damaged hair

- Enriched with nourishing Macadamia Oil and Hydrolyzed wheat protein, the Keracare Smooth Renew Mask deeply conditions hair
- It helps manage dryness and frizz to provide ultimate smoothness to unruly tresses. Its revolutionary conditioning technology makes hair look manageable, naturally soft, smooth and gorgeous*
- **2X Smooth Hair****: Use the Keracare Smooth Renew Shampoo with the Mask to renew and maintain the smoothness of your hair
- **USAGE TIP**: Remove excess water post shampooing. Scoop a bit of the mask with your fingers and apply evenly to hair lengths and ends, avoiding the scalp. Leave it on for at least 3 minutes. Rinse thoroughly.
- **pH 4.5-5**

*When tested in lab as Shampoo + Conditioner/Mask vs ordinary non-conditioning shampoo.

** Based on Study conducted (Instrumental test) for Keracare Smooth Renew Shampoo and Mask vs Non conditioning shampoo. Test performed by external agency under controlled laboratory conditions.



Acai Oil

For normal to dry and porous hair | Moisturized,
shiny sleek finish

- Our beautifully delicate formula is enriched with nourishing Acai Oil which is known to be rich in essential vitamins & antioxidants that help create a protective barrier for your hair. This formulation leaves the hair looking moisturized, smooth and shiny plus easier to brush and style.
- **Direction for use:** Take 2 pumps on the palms, emulsify & spread over hair focusing on hair lengths and ends. Can be used on dry or damp hair. Do not rinse. In case of contact with eyes rinse immediately



Argan Oil

Chemically treated and damaged hair
Revitalised, silky-gloss finish

- Keracare Argan Oil is enriched with the goodness of Argan Oil known to help repair, strengthen, replenish dry and damaged hair. It is non-greasy and greatly effective to make hair look glossy, sleek and supremely conditioned.
- **USAGE INSTRUCTIONS:** Works best on damp, towel dried hair. Take a small quantity on your palms. Apply evenly focusing on mid-lengths and ends. Style as desired. In case of contact with eyes, rinse immediately.



Macadamia Oil

For dry and frizzy hair

- Keracare Macadamia Oil is a light, non greasy formula that combats dryness and controls frizz, making the unruly hair smooth and manageable.
- It renews smoothness, nourishes and adds shine to your tresses without making them heavy.

USAGE INSTRUCTIONS: Take 2 pumps on the palms, emulsify & spread over hair focusing on hair lengths and ends. Can be used on dry or damp hair. Do not rinse. In case of contact with eyes rinse immediately.



Start with Client Consultation to check the hair & scalp for any contraindication like cuts, skin conditions, abrasions before starting the treatment.



Shampoo the hair with CLARIFYING Shampoo up to 2 times. If chemically treated hair then shampoo single wash.

Rinse & blast dry the hair 100%.

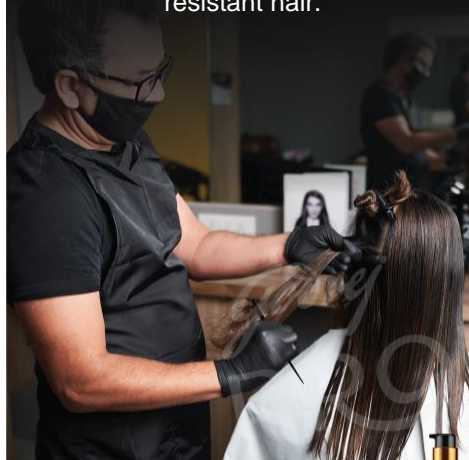


Step-by-Step

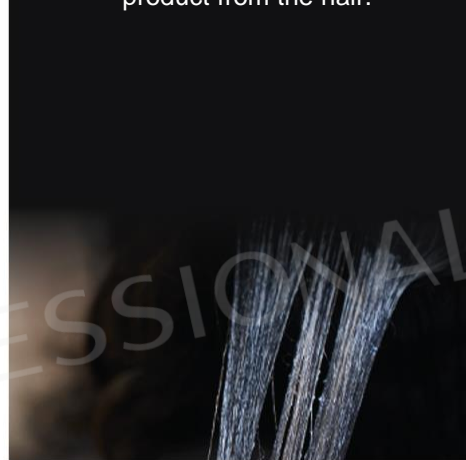


Apply ACAI OIL section by section on highly coloured, porous, sensitised, fragile, dry parts of hair taking thick sections and emulsify well.

DO NOT apply Acai Oil on virgin, resistant hair.

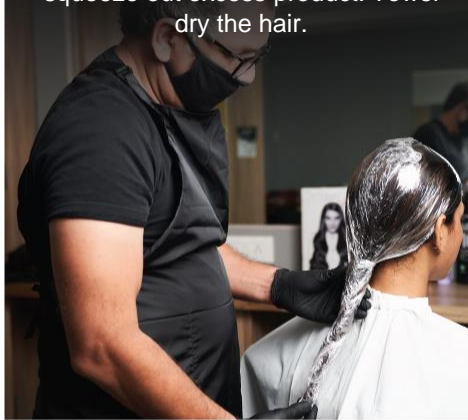


Divide the hair into 4 sections and start applying ¼ inch away from the roots in a dab dab technique all the way towards the ends. Comb the hair for even distribution of the product and to remove excess product from the hair.



Wrap the hair with a cling film & let it process hair for
-30-40 mins for highly sensitised hair
-50 -60 mins for virgin/ resistant and untreated thick hair.

Rinse the hair with 150- 200 ml of water and emulsify the hair and squeeze out excess product. Towel dry the hair.



Using a round brush blow dry the hair straight on medium to high heat & high speed



-200 to 220 degree for virgin, resistant, thick and curl pattern 2c/3a and above

-180-200 (for colored/ sensitized / pre lightened hair)

Iron swipes – 15-20 swipes for for virgin, resistant , thick and curl pattern 2c/3a and above
10-15 swipes for colored/ sensitized / pre lightened hair

Post ironing, wait for 10-15mins for the hair to cool down to normal temperature.



Rinse the hair thoroughly with water.
Use Keracare keratin repair/
recharge/smooth mask as per the
hair type. Keep it on for 5-7 mins.
Rinse off completely.



Towel dry the hair, apply acai oil
(optional), blast the hair to 100%. Show
the client the blast dried effect. Post that
blow dry the hair for natural straight
finished look. Use macadamia oil on
finished result for long lasting smooth
and shinier looking hair. (optional)

Inform the client to about post care,
usage of Godrej professional Keracare
sulphate free range of shampoos and
mask is 100% necessary for long
lasting effect for upto 60 washes.
(depending on subjective factors)



Home Care



FAQs:

Question

Is Botosmooth Protein Reconstruction Treatment a **Keratin Treatment** or a **straightening service**?

Botosmooth is a formaldehyde free botox treatment that reduces frizz upto 80-90 percent, and straightens your hair upto 90 percent.

What is the recommended age for Botosmooth Protein Reconstruction Treatment?

Botosmooth Protein Treatment is recommended for age 15 and above

Can Colour be done before & after Botosmooth Protein Reconstruction Treatment?

Yes basic colour can be done post Botosmooth. We don't recommend heavy pre lightening or usage of higher volume of peroxide.

Why is Botosmooth Protein Reconstruction Treatment the **best choice**?

It is the best way to reconstruct and transform hair. It is absolutely safe as it is Formaldehyde free and works in reconstructing hair while delivering straighter looking hair with massive shine and softness to your tresses.

FAQs:

Question

Will swimming in a pool or in the ocean affect the Botosmooth Protein Reconstruction Treatment longevity?

Swimming in a pool or ocean is not recommended after the Botosmooth Treatment as the chlorine/salt in the water would cause the treatment to fade away sooner than expected. We recommend using Acai Oil on hair to take extra care of the hair in case the hair is wet in a swimming pool or ocean water

How long will Botosmooth Protein Reconstruction Treatment last in the hair?

This treatment should last upto 60 washes, with proper after care guidelines. Usage of Keracare sulfate range is highly recommended for optimum and long lasting results.

Can Botosmooth Protein Reconstruction Treatment be used on pregnant women?

We recommend clients consult with their doctor before undergoing any such service

FAQs:

Question

Can the Botosmooth Protein Reconstruction Treatment be **done after any straightening or relaxing service?**

Yes, the Botosmooth Protein Reconstruction Treatment can be done post any straightening service. Avoid straightening service over any Keratin treated hair.

On the next scheduled visit, should a client just get a **touch up of Botosmooth Protein Reconstruction Treatment?**

Botosmooth Protein Reconstruction Treatment does not grow out of the hair but gradually fades out hence it is recommended to do the service on the entire hair and not just regrowth

What home care is best to use after the service of Botosmooth Protein Reconstruction Treatment?

The best home care for Botosmooth Protein Reconstruction Treatment is KeraCare Sulphate & paraben free shampoo, Conditioner / Mask as its designed to work post the Botosmooth Protein Reconstruction Treatment

FAQs:

Question

Does Botosmooth work on heena treated hair or box dyed hair?

We don't guarantee if it will work on heena treated or excessively dye coated hair. We recommend you take a strand test to avoid any disappointment or any commitment with your clients..

Whats the difference between Botosmooth and Kerasmooth?

Botosmooth is a hair botox treatment provides massive shine, controls frizz upto 90 % and gives straight looking hair result upto 90 %. It's a one sitting process. The client will get to see the end result on the same day. Last up to 60 washes

Keramooth is a keratin treatment which gives maximum frizz control, leaves the hair smoother and softer, This treatment doesn't promise straightness. Its primarily a frizz control treatment and for clients who don't want their hair straight and flat. It's a 2 sitting process, client will see the end result the next day of the treatment, when they revisit for their first wash after 24 hrs. This treatment also last for 60 washes

Do's & Don'ts

- Treatment is not a permanent straightening or rebonding product and it will only make the hair upto 90 percent straight. Depending on hairtype and post wash care.
- Make sure the hair is properly shampooed prior to treatment so the cuticles are open before applying the product
- Wrap the hair with cling film after product application
- Apply even amount of cream ¼th inch away from the roots to end of hair
- Inform client about the benefits and clarify that the treatment improves the condition of the hair and eliminates frizz from it, while adding strength and shine to the hair and giving the hair a naturally smoothed look
- The treatment gradually fades away from the hair lasting for upto 60 shampoo's (depending on number of shampoo's)
- Wash your hair with the suggested KeraCare sulphate & paraben free shampoo and conditioner/ mask after 2-3 days. Leave the conditioner/mask on hair for a few minutes longer than usual.
- Inform the client that Botosmooth Protein Reconstruction
 - Avoid hot water always as it will strip your tresses of moisture
 - If you wish to colour your hair, then do it before the Botosmooth Treatment, with 1- 2 shades darker colour
 - Any chemical service such as highlighting, colouring or rebonding is recommended a week or two prior to the Botosmooth treatment.
 - Doing a chemical service after doing the Botosmooth Treatment may cause the treatment to strip out of the hair
 - Avoid any Ammonium Thioglycolate based treatments post any Keratin treatment (eg: straightening, rebonding, perming etc.)
 - Swimming is not recommended after the Botosmooth Treatment as the chlorine in the water would cause the treatment to fade away sooner than expected
 - Shampooing the hair daily, could cause the treatment to fade faster
 - The use of Henna or Metallic Dyes before or after the Botosmooth Protein Reconstruction Treatment is **not** recommended as it can affect the result and longevity of the Botosmooth treatment

THANK YOU

Godrej
PROFESSIONAL

